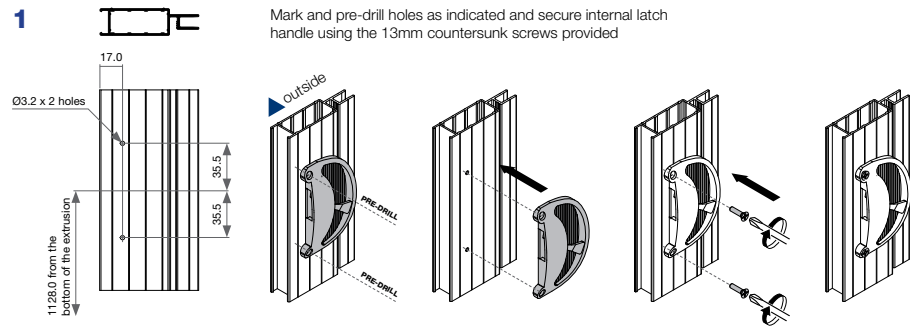


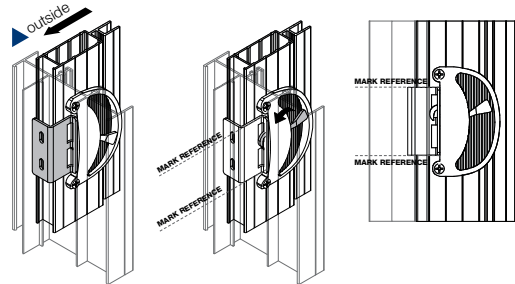
Instructions

Fly Door Latch Installation

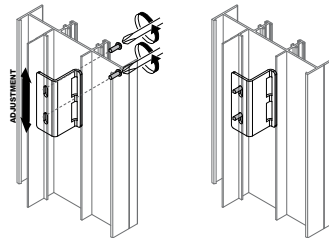
NOTE: This instruction is used on 2 lite sliding doors & 3 lite stacker doors



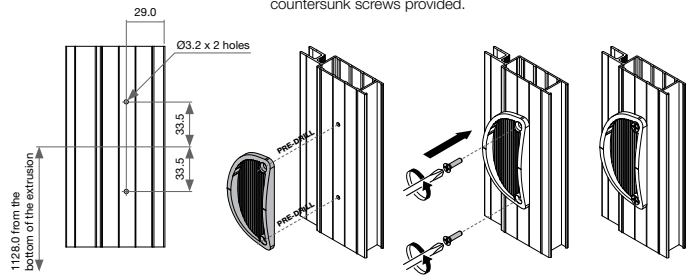
2 Close the door with the keeper, engage the keeper in the closed position and mark the position of the keeper from the inside.



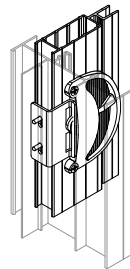
3 Open the door and place the keeper in position and secure into place using the 13mm pan head screws provided. Keeper can be adjusted.



4 Mark and pre-drill holes from the outside as indicated and secure external pull handle using the 13mm countersunk screws provided.

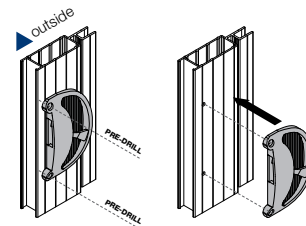


5 Check and adjust if required

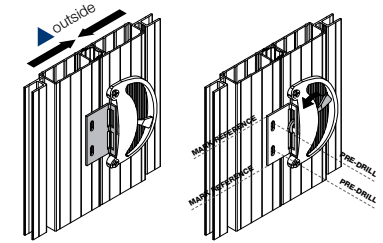


NOTE: This instruction is used on 4 lite sliding doors & 6 lite stacker doors

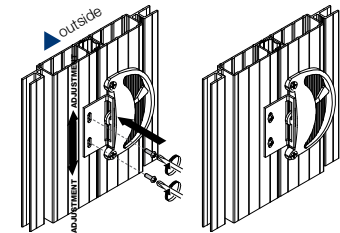
1 Mark and pre-drill holes as indicated and secure internal latch handle using the 13mm countersunk screws provided.



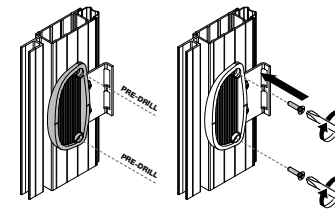
2 Close the door with the keeper, engage the keeper in the closed position and mark the position of the keeper.



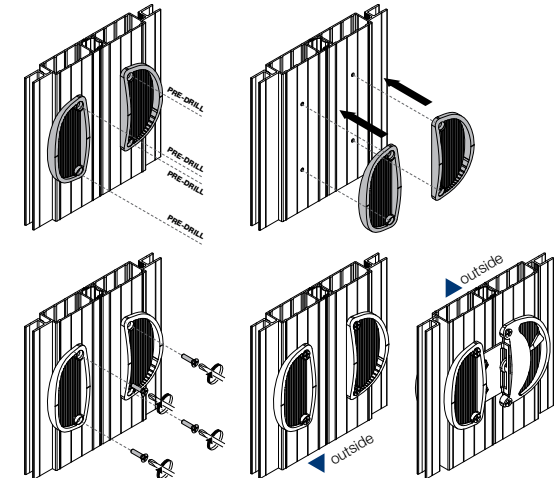
3 Place the keeper in position and secure into place using the 13mm pan head screws provided. Keeper can be adjusted.



4 Mark and pre-drill holes as indicated and secure internal pull handle using the 13mm countersunk screws provided.



5 Mark and pre-drill holes as indicated and secure external pull handle using the 13mm countersunk screws provided.



Please note that drawings are not to scale

Instructions | Fly Door Latch Installation | Mk-1 | 25 Feb 2010

Confidentiality Notice: This document and the information it contains are copyright and confidential to Trend® Windows & Doors Pty Limited. Disclosure, use and copying in any form whatsoever, except as authorised by Trend® Windows & Doors in writing, are strictly prohibited. Patents and Design Registrations pending.