



Quantum[®] Louvre Window

Features & Benefits

Louvre Window - Features & Benefits

FRAME

- Overall frame size 130mm wide.
- When using 130mm frame, minimum recommended reveal size is 138mm.
- Installed as a single frame or ideal for combination styles with other Quantum® products.

LOUVRE BLADES

- Blades are 152mm or 102mm widths.
- Opaque, tinted or toughened glass blades available.
- Timber, aluminium blades available.
- 6mm toughened glass blades are supplied as standard.

GLAZING & ENERGY EFFICIENCY

- All Trend® Windows and Doors comply with Australian Standards AS1288.
- 6mm glass supplied only as standard.
- Optional frosted, etched, tinted or toughened glass available.
- Energy efficiency options available to help reduce home energy consumption.
- All glazing options are Window Energy Rating Scheme (WERS) rated - providing a wide range of energy efficient solutions.

ACOUSTICS

- Acoustic solutions available for improved noise reduction.

WIND & WATER RATINGS

- All Trend® Windows and Doors are designed to meet and surpass 700Pa wind velocity rating and 150Pa water penetration rating and comply with Australian Standards AS2047.
- Louvre windows rated at an air infiltration of 1.48L/s m².

SECURITY

- 100mm safety window restrictor is available if required.
 - Security bars to fit standard blade widths**.
 - **Breezway** Stronghold System available.
- **Breezway 130mm Easy Frame louvre only.



Louvre Window - Features & Benefits

BUSHFIRE

- Meets BAL-29 - to Australian Standards AS3959-2009.

HARDWARE

- Handles can be configured to left, right, high or low placement.
- Optional *Altair Power Louvre* available for "out-of-reach" configurations.
- Optional key lock available.
- Optional, easy to operate A13, low profile and "O-Ring" handles available.

OPTIONS

- Wide range of powder coated colours.
- Customised WERS ratings.
- Variety of sizes and custom made options available.
- Variety of configuration options available.
- Easy to install flyscreens fitted to exterior of window.

DELIVERY

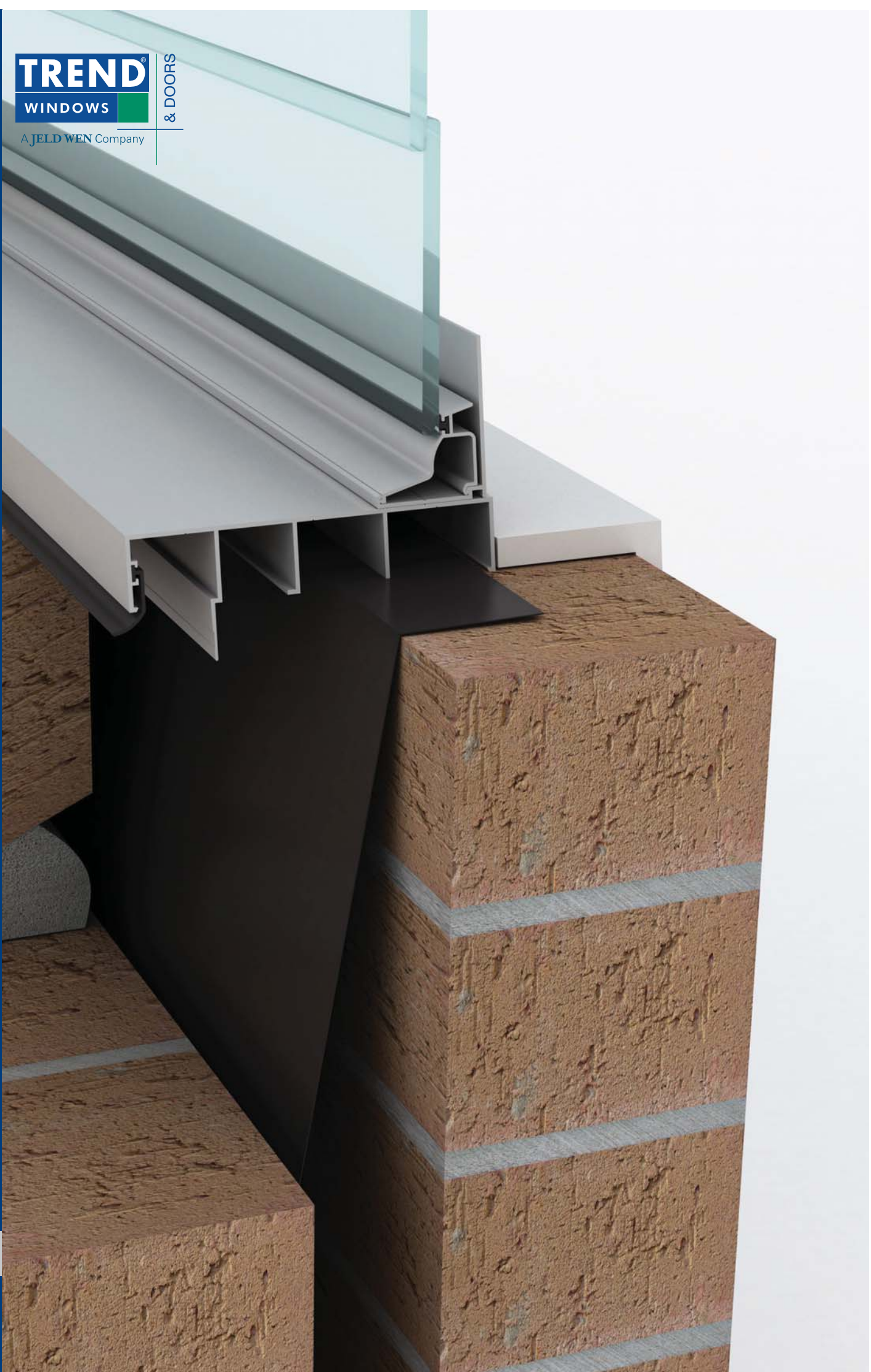
- Protective wrapping for delivery to site comes standard for all Quantum® products.



TREND
WINDOWS

& DOORS

A JELD WEN Company





Quantum[®] Louvre Window Installation

Louvre Window - Installation

Building In Detail | Brick Veneer - 240mm wall



INSTALLING FRAME CORRECTLY

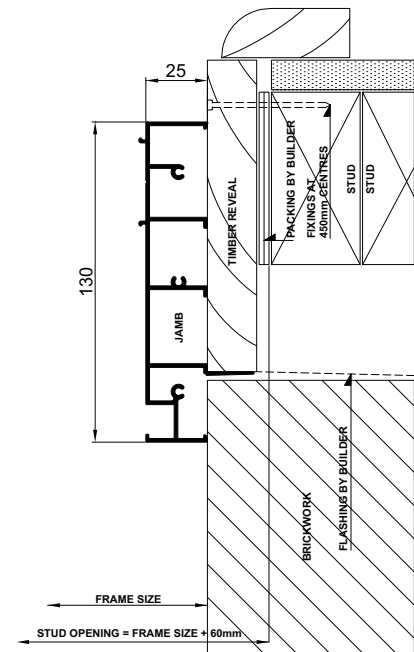
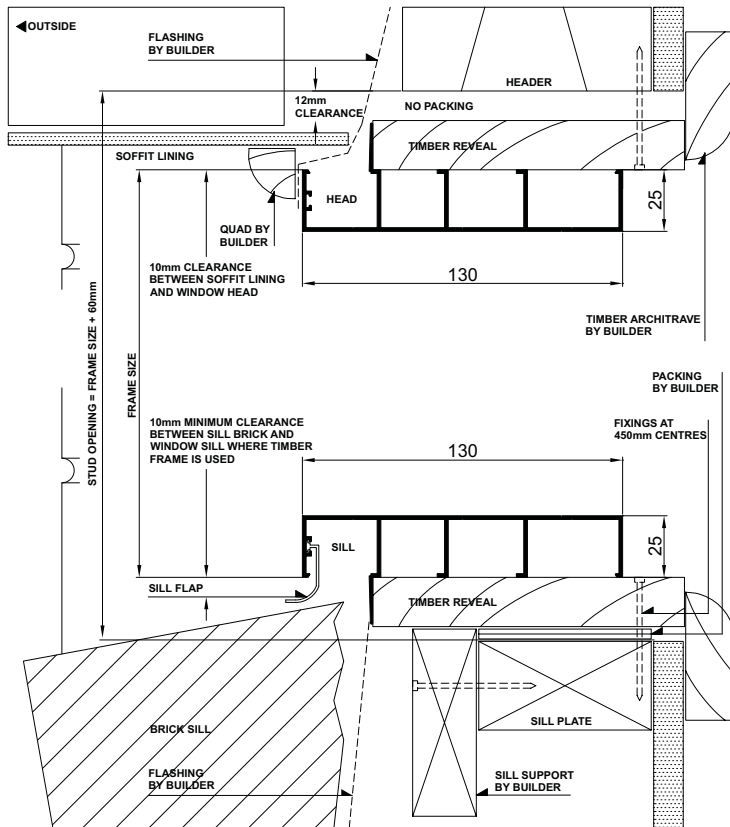
- Fit flashing to window surround (refer to drawing below).
- Measure the frame opening to ensure that there is sufficient room for the product and additional packing.

Stud Opening:

Height = Frame Size + 60mm

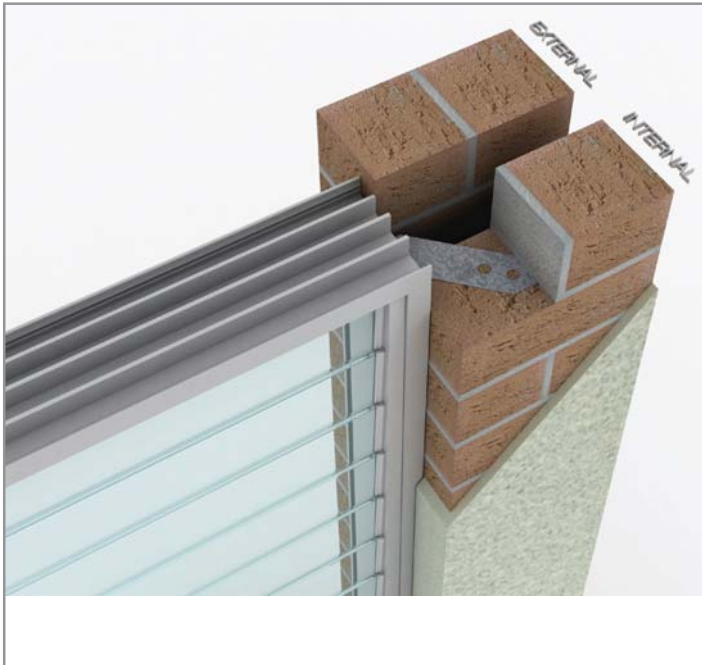
Width = Frame Size + 60mm

- Secure aluminum windows by nailing through reveal into studwork - fixing at 450mm maximum centres.
- Sill bricks should be at least 10mm clear of window frame to allow settlement in brick veneer construction.
- Header beam should be at least 12mm clear of window frame.
- Do not permit weight of eaves or arch bars to bear on any window or door frame. **(Windows and doors are not load bearing.)**
- To ensure the satisfactory long term performance of window, install sill support (refer to drawings below).



Louvre Window - Installation

Building In Detail | Double Brick - 280mm wall



INSTALLING FRAME CORRECTLY

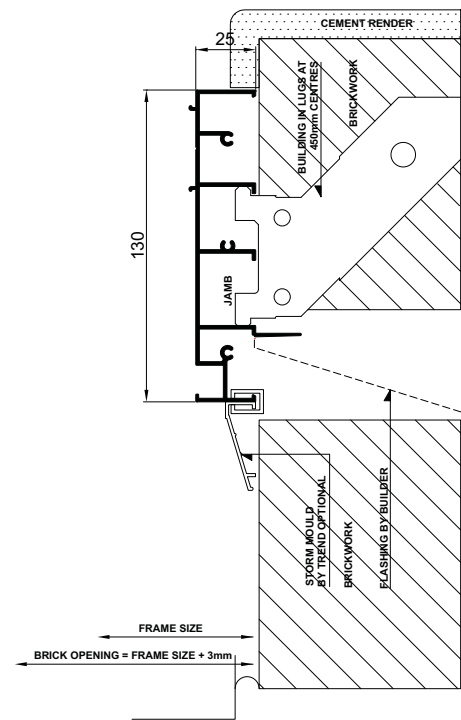
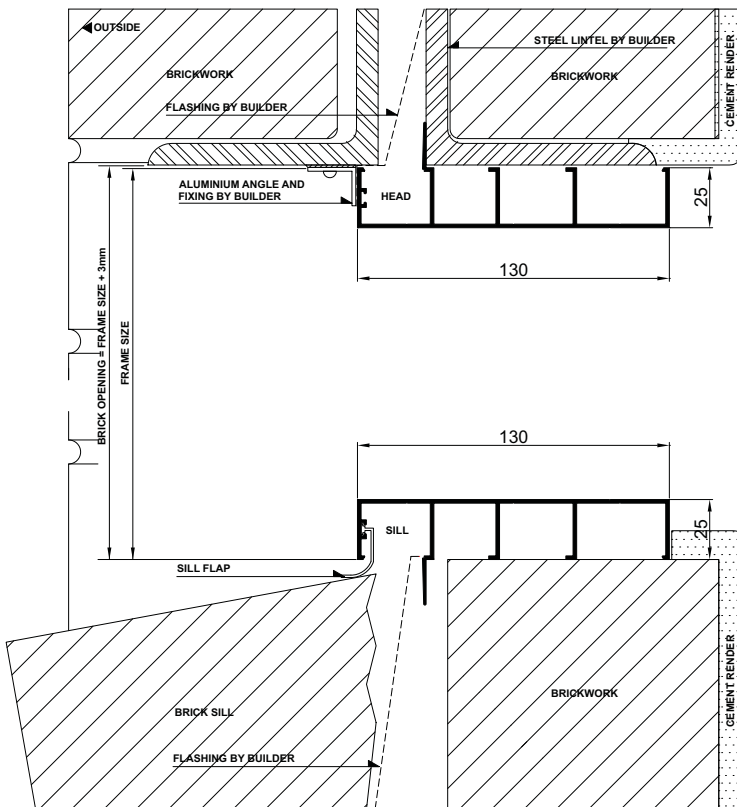
- Fit flashing to window surround (refer to drawing below).
- Measure the frame opening to ensure that there is sufficient room for the product and additional packing.

Brick Opening:

Height = Frame Size + 3mm

Width = Frame Size + 3mm

- Secure aluminum windows by using building lug - fixing at 450mm maximum centres.
- Sill bricks should be at least 10mm clear of window frame to allow settlement in brick veneer construction.
- Do not permit weight of eaves or arch bars to bear on any window or door frame. **(Windows and doors are not load bearing.)**



Please note that drawings displayed are not to scale

Louvre Window - Installation

Building In Detail | Double Brick - 280mm wall | Prepared Opening



INSTALLING FRAME CORRECTLY

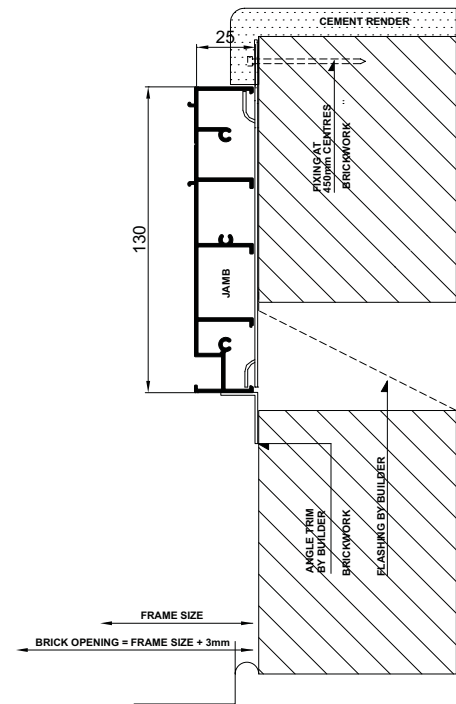
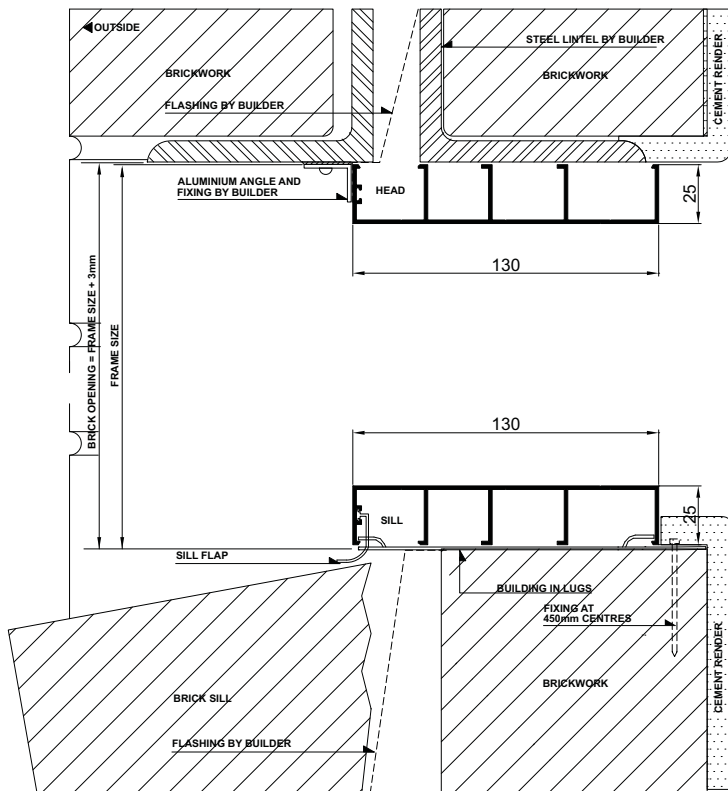
- Fit flashing to window surround (refer to drawing below).
- Measure the frame opening to ensure that there is sufficient room for the product and additional packing.

Brick Opening:

Height = Frame Size + 3mm

Width = Frame Size + 3mm

- Secure aluminum windows by using building lug - fixing at 450mm maximum centres.
- Sill bricks should be at least 10mm clear of window frame to allow settlement in brick veneer construction.
- Do not permit weight of eaves or arch bars to bear on any window or door frame. **(Windows and doors are not load bearing.)**



Louvre Window - Installation

Building In Detail | Cladding on Studwall



INSTALLING FRAME CORRECTLY

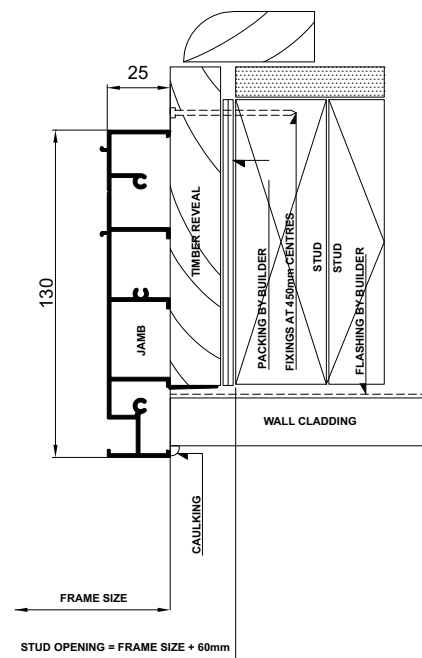
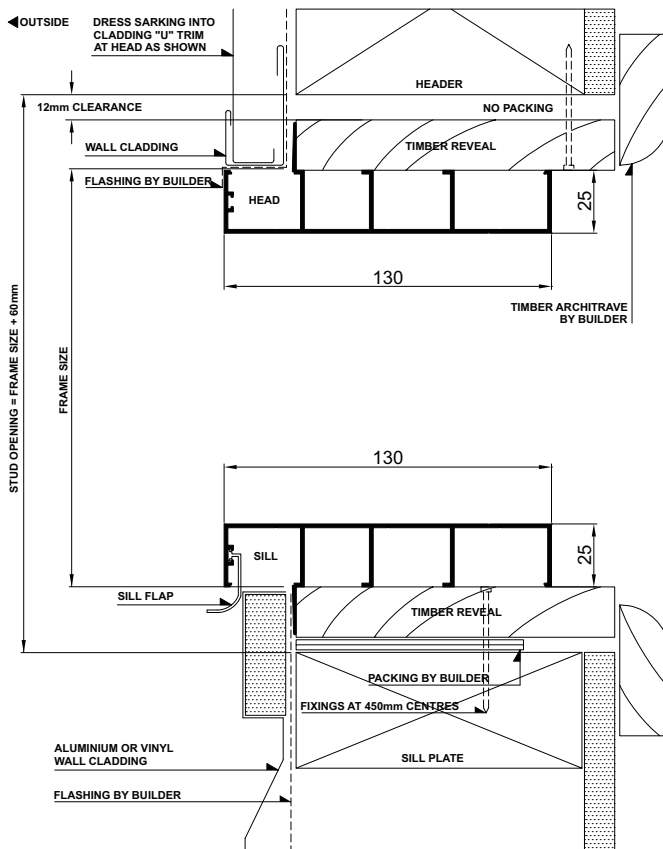
- Fit flashing to window surround (refer to drawing below).
- Measure the frame opening to ensure that there is sufficient room for the product and additional packing.

Stud Opening:

Height = Frame Size + 60mm

Width = Frame Size + 60mm

- Secure aluminum windows by nailing through reveal into studwork - fixing at 450mm maximum centres.
- Header beam should be at least 12mm clear of window frame.
- Do not permit weight of eaves or arch bars to bear on any window or door frame. (**Windows and doors are not load bearing.**)
- To ensure the satisfactory long term performance of windows, install sill support (refer to drawings below).



Please note that drawings displayed are not to scale

Louvre Window - Installation

Building In Detail | **Blockwork**



INSTALLING FRAME CORRECTLY

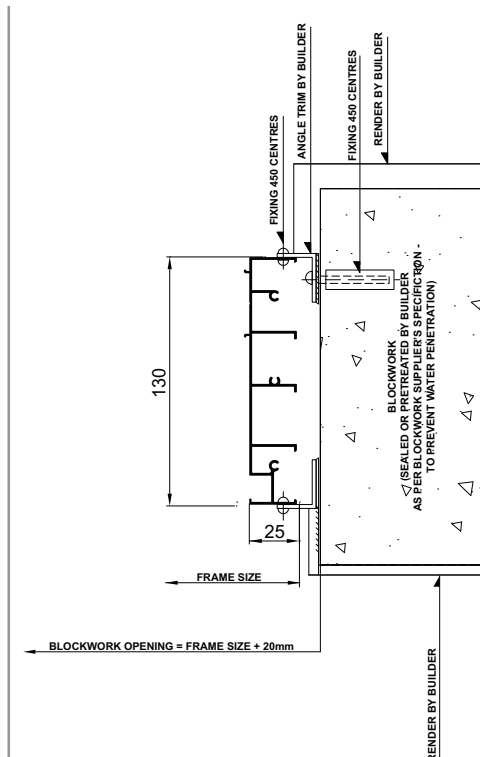
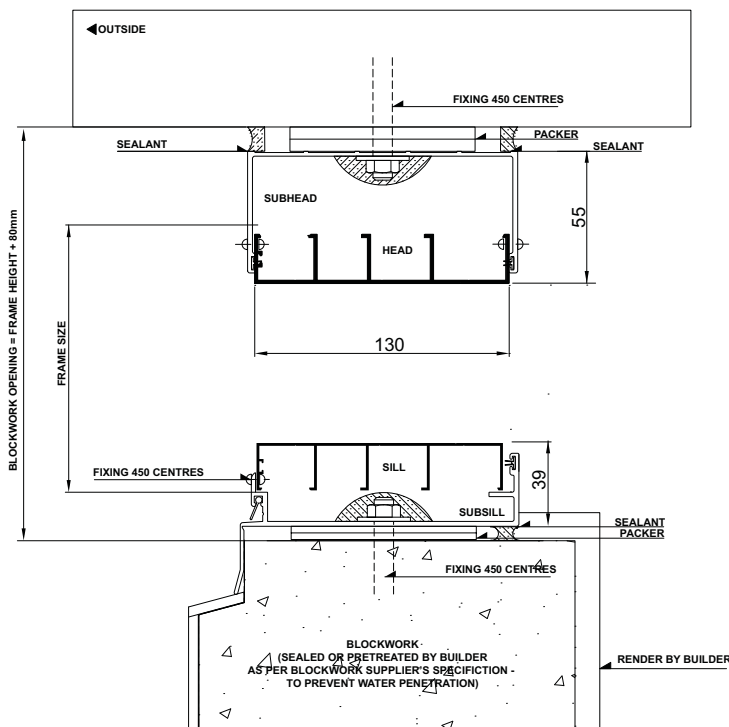
- Measure the frame opening to ensure that there is sufficient room for the product and additional packing.

Blockwork Opening:

Height = Frame Size + 80mm

Width = Frame Size + 20mm

- Fit subframe to opening and seal fixings.
- Seal ends of subsill with angle.
- Fit window to subframe (screw or pop-rivet).
- Do not permit weight of eaves or arch bars to bear on any window or door frame. **(Windows and doors are not load bearing.)**





INSTALLING FRAME CORRECTLY

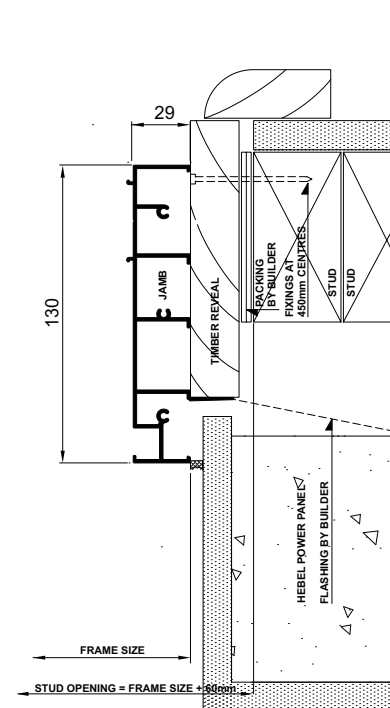
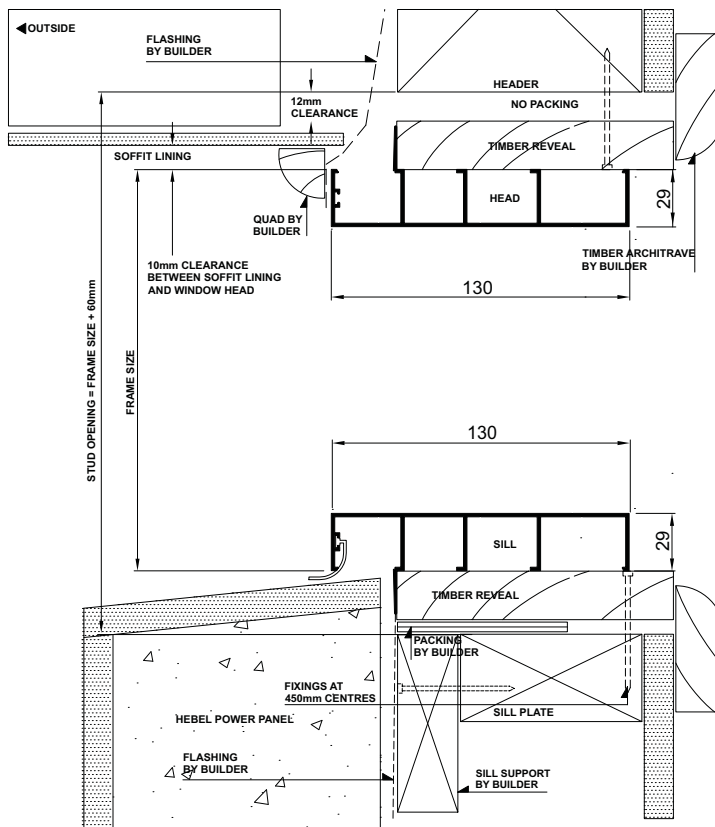
- Fit flashing to window surround (refer to drawing below).
- Measure the frame opening to ensure that there is sufficient room for the product and additional packing.

Stud Opening:

Height = Frame Size + 60mm

Width = Frame Size + 60mm

- Secure aluminum windows by nailing through reveal into studwork - fixing at 450mm maximum centres.
- Caulk between render and frame.
- Header beam should be at least 12mm clear of window frame.
- Do not permit weight of eaves or arch bars to bear on any window or door frame. **(Windows and doors are not load bearing.)**
- To ensure the satisfactory long term performance of windows, install sill support (refer to drawings below).



Please note that drawings displayed are not to scale

TREND[®]
WINDOWS

& DOORS

A JELD-WEN Company

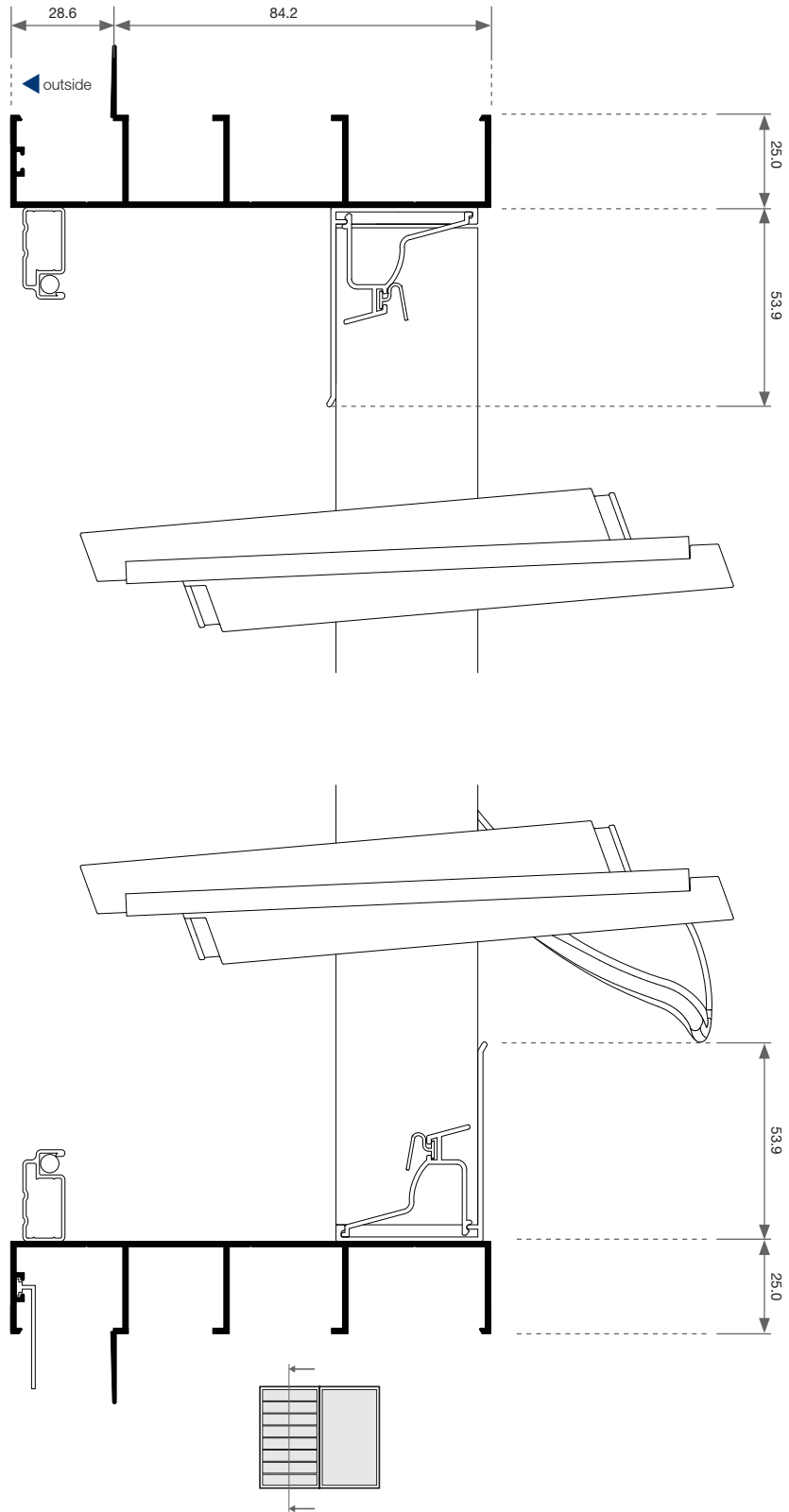


Quantum[®] Louvre Window

Cross Sectional Views

Louvre Window - Cross Sectional View

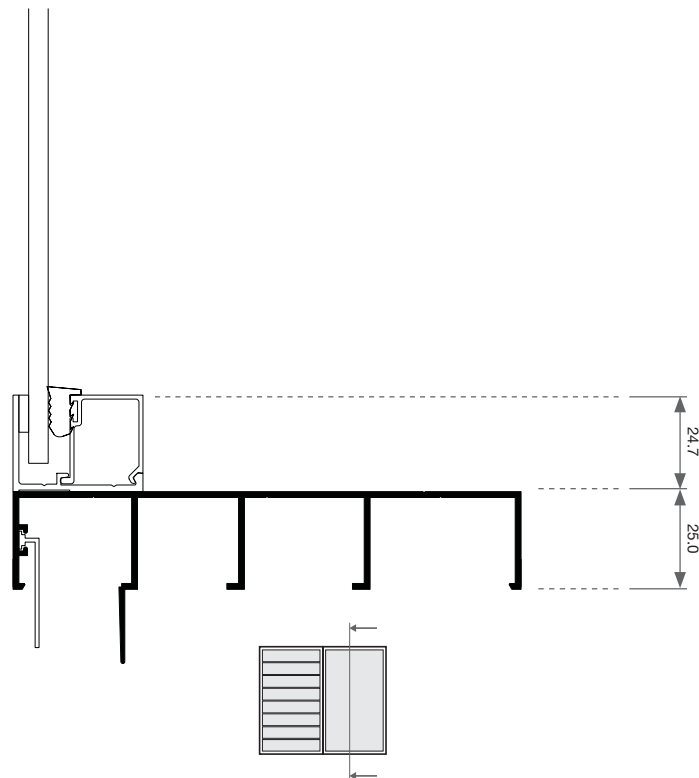
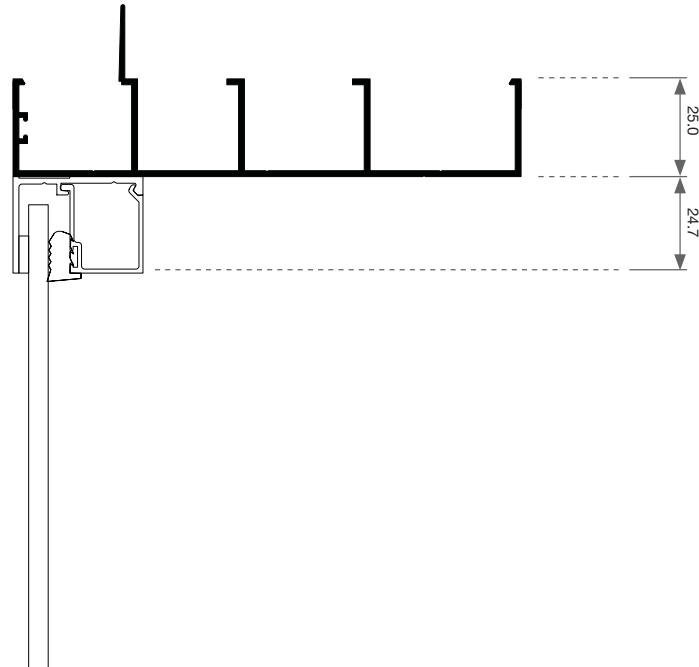
Two Lite | Blades | Elevation





Louvre Window - Cross Sectional View

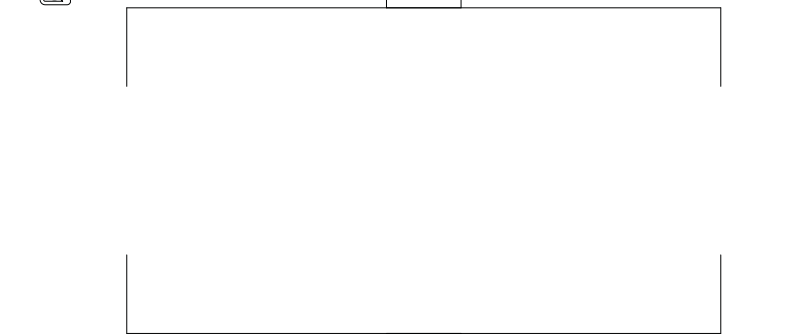
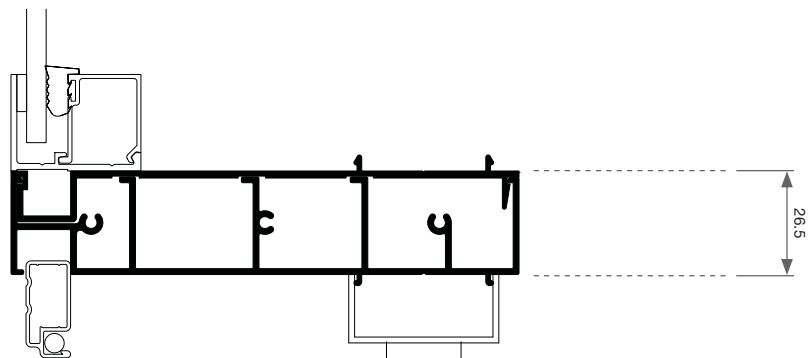
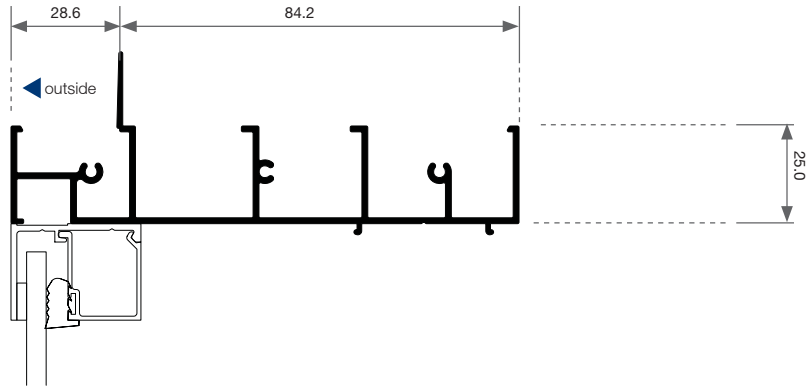
Two Lite | Fixed Lite | Elevation



Please note that drawings displayed are not to scale

Louvre Window - Cross Sectional View

Two Lite | Plan



Please note that drawings displayed are not to scale

