

Xtreme Quantum Aluminium[®]

Casement Window

TECHNICAL DATA

Features & Benefits

Size Range

Ordering Details

Installation

Cross Sectional Views

Features & Benefits

Xtreme® Quantum Casement Window

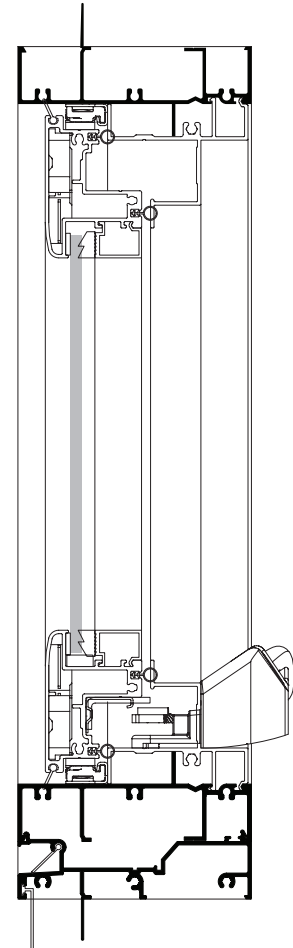
*Xtreme® Windows & Doors have been tested to AS1530.8.1, and comply to Section 8 Construction Service Bushfire Attack Level 40 (BAL-40), Radiant Heat Level 40kW/m², AS3959 (2009). For full details of Standards requirements for individual products please refer to Trend Windows & Doors Technical Department.

- 1 **Bushfire Features**
Xtreme® Bushfire Windows & Doors have been tested to withstand temperatures up to 40kWm² without failure from either the glazing or from the window system itself, to help prevent internal ignition of houses and loss of precious possessions.
- 2 **Xtreme® Bushfire Windows & Doors System**
Features include patented Van Door® and Pyro-Protect™ Sealing Systems acting to protect the home against wind, water, noise dust and bushfire penetration. Trend® has combined the technologically advanced Xtreme XP® Windows system with Pyro-Protect™ seals, glazing systems and 5mm standard toughened glass to produce Xtreme® Windows and Doors.
- 3 **Energy Efficiency Options**
Trend® Thermashield® in various glazing styles are available to help reduce energy consumption. Trend® Thermashield® means greater control, bigger savings and most importantly one less thing to worry about. Energy efficient options to u-value of 4.4 and SHGC 0.42 are available for Xtreme® Casement window.
- 4 **Acoustic options**
SoundMizer® acoustic solutions in various STC ratings, are available to STC 31 for Xtreme® Bushfire Casement window. SoundMizer® acoustic solutions can reduce aircraft, highway traffic, railway and other annoying noise problems. For information or technical details contact Trend®.
- 3 **Key Lock Scissor Winder**
Xtreme® Bushfire Windows & Doors winder mechanism is designed specifically for high performance, security and reliability. The winder can be used in even the harshest environment without worry of corrosion.

Secura hardware is available in stainless steel or powder coat finishes. 100mm restrictor openers are available for safety options
- 4 **Side Sash Latch**
Handle is operated by 180° rotation from open to closed position and is concealed within the window frame. Operation pulls in sash for a tighter seal against the weather and improved security.
- 6 **Glazing**
Xtreme® Bushfire Windows & Doors sash is available in 4mm thick glass to 24mm double glazing for energy efficiency applications. Acoustic solutions are also available to high STC ratings.
- 7 **Frames**
Xtreme® Bushfire Windows & Doors framing offers a commercial look for apartments, high end residential, or where ever a commercial frame is required. This robust 102mm frame allows for large fixed lite applications for greater viewing area.

Xtreme® Bushfire Windows & Doors has a truly solid look, reminiscent of timber, and is extremely popular in both traditional and contemporary house designs.
- 7 **Finishes**
Powdercoated finishes are available in a range of colours and finishes including Warranty Powders and Anodised options to suit most applications
- 8 **Window Placement**
Care should be taken with locating opening Casement Windows in pedestrian traffic areas.
- 9 **Protective Wrapping**
Protective wrapping for delivery to site is a standard for all Xtreme® Bushfire Windows & Doors products.
- 9 **Options**
Easy to fit tension loaded flyscreens can be fitted and removed from the inside. Wide range of powdercoat finishes available including timber powdercoat finishes.

Keyed lock is standard for added security



Size Range

Xtreme® Quantum Casement Window

STUD OPENING WINDOW	670	780	910	1260	1630	1860	2230	2460	2710
	610	720	850	1200	1570	1800	2170	2400	2650
1000									
1090									
1260									
1430									
1860									
2095									
2035									
2095									

All windows and doors are designed to 700pa velocity and 150pa water rating. For higher ratings consult Xtreme® Windows & Doors

Maximum frame height is 3000mm

Maximum single glass area is 2.4m²

Screens to be fitted to operating sash area only

NOTES

Xtreme® Bushfire Windows & Doors is available in a 62mm wide sash giving a strong and secure look reminiscent of timber. Ease of operation is facilitated by an operating mechanism specifically designed to fit and complement the Xtreme® Bushfire Casement Windows

* Maximum sash width 720mm

Also available in Colonial and Federation Bar styles.

The above illustrations are window codes for Xtreme® Bushfire Windows & Doors.

For information on double-glazing or wind ratings, please contact Trend® Windows & Doors Sales Representative.



Please note that drawings are not to scale

Xtreme® Quantum Casement | QCC-E | Mk-1 | 23 July 2012

Confidentiality Notice: This document and the information it contains are copyright and confidential to Trend® Windows & Doors Pty Limited. Disclosure, use and copying in any form whatsoever, except as authorised by Trend® Windows & Doors in writing, are strictly prohibited. Patents and Design Registrations pending.

Ordering Details

Xtreme[®] Quantum Casement Window

All windows are illustrated as viewed from outside. Codes shown are for plain windows.

Manufactured from 101mm aluminium extrusion.

The first two numbers of code indicate approximate height, the last two numbers indicate approximate width.

Sash Style Options:

E indicates standard Xtreme Sash, eg window code QCC0906E

Configuration Options:

C indicates Casement

CF indicates Casement/Fixed

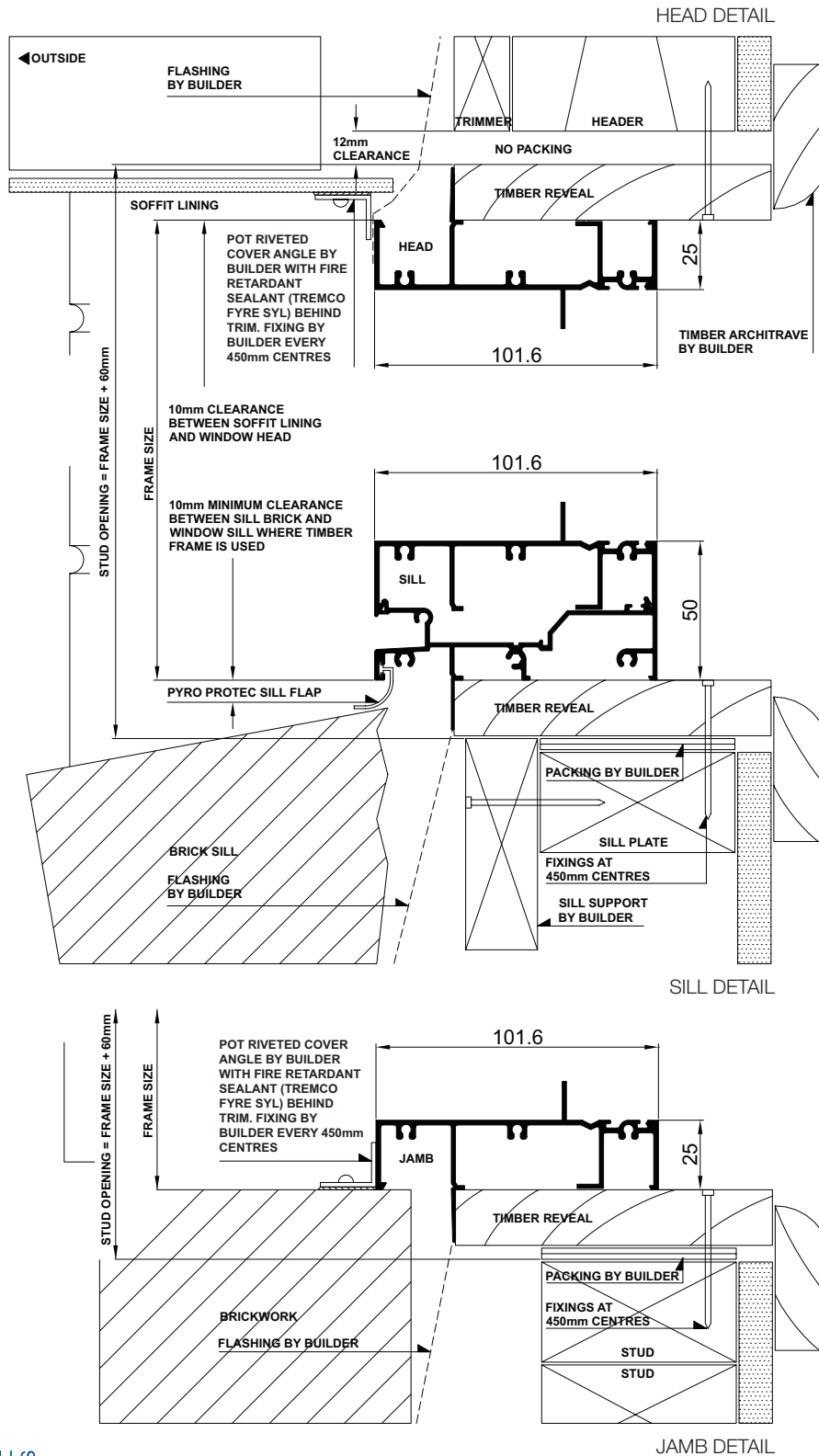
CC indicates Casement/Casement

CFC indicates Casement/Fixed/Casement

T after the size indicates a Transom

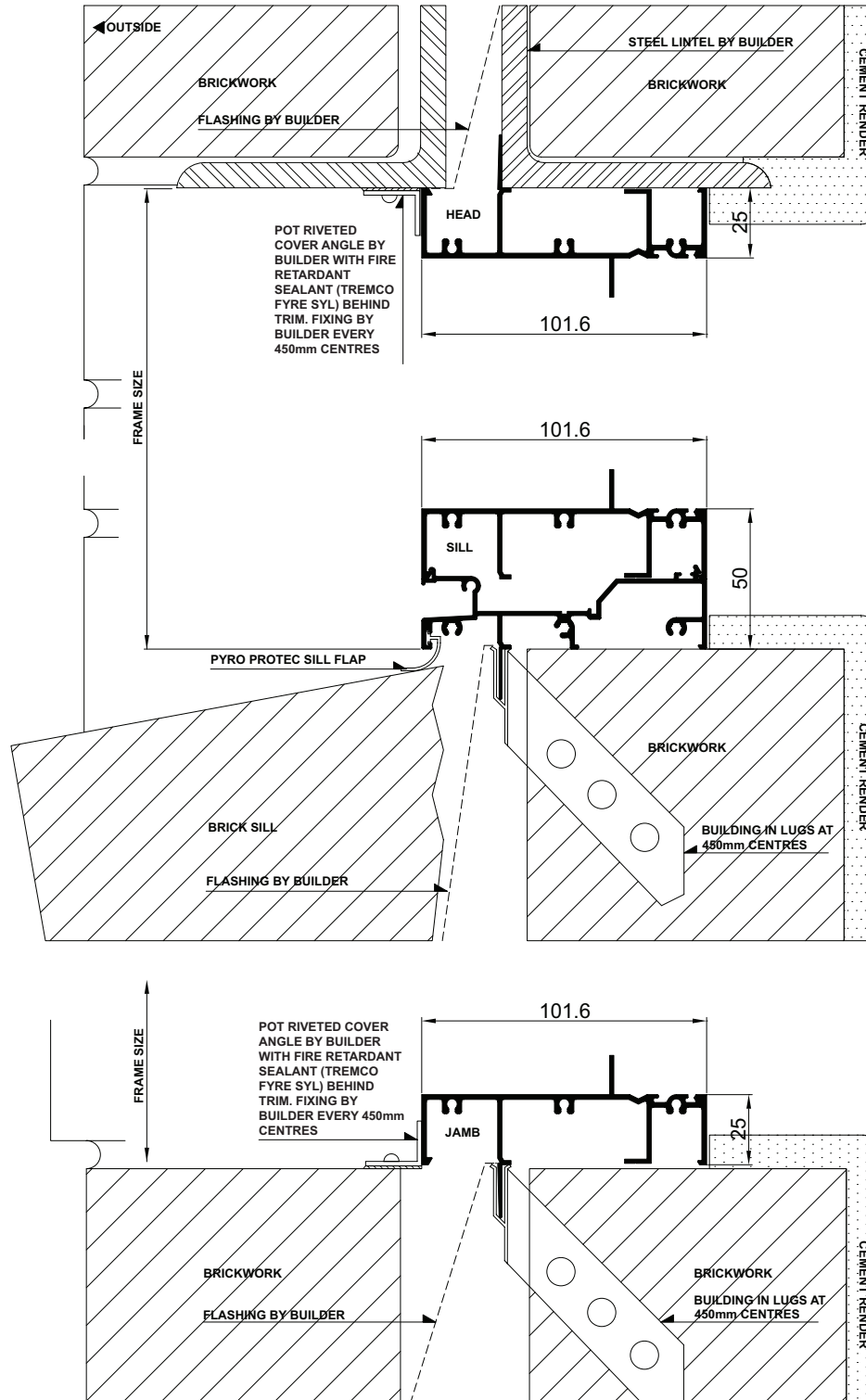
Installation

Xtreme® Quantum Casement Window | Building In Detail | **Brick Veneer - 230mm wall**



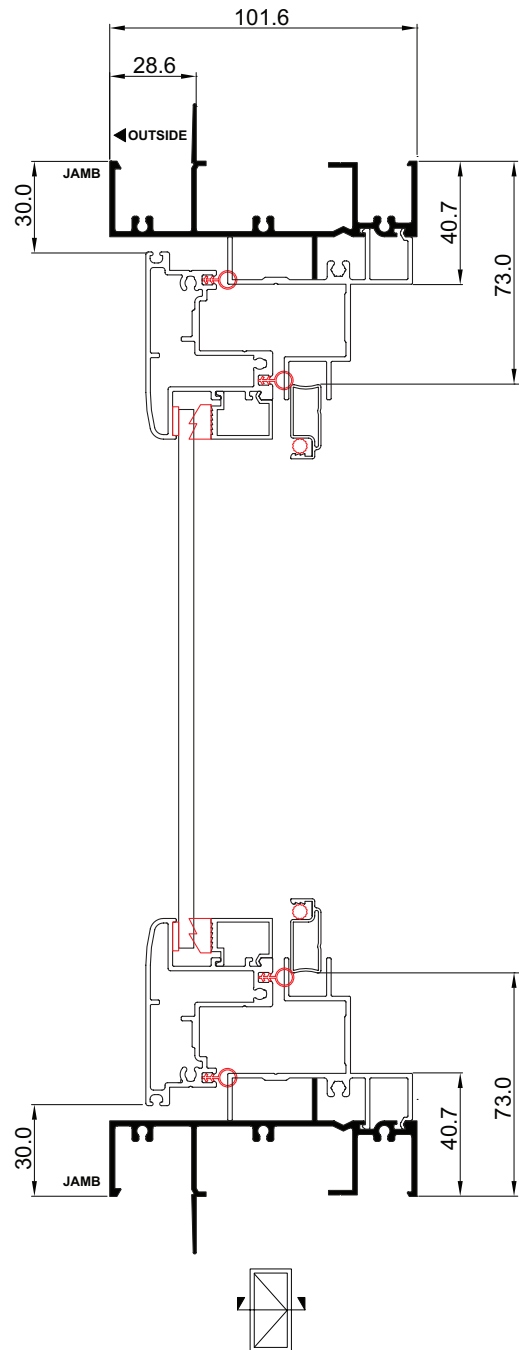
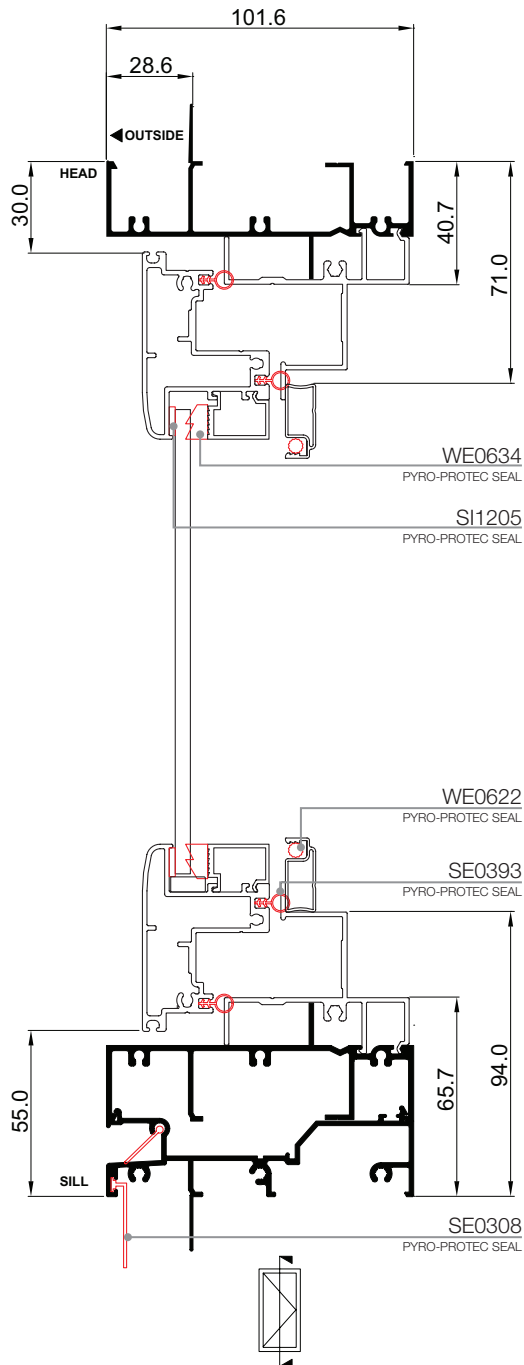
Installation

Xtreme® Quantum Casement Window | Building In Detail | **Double Brick - 280mm wall**



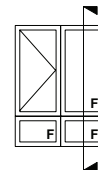
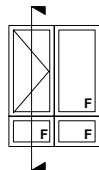
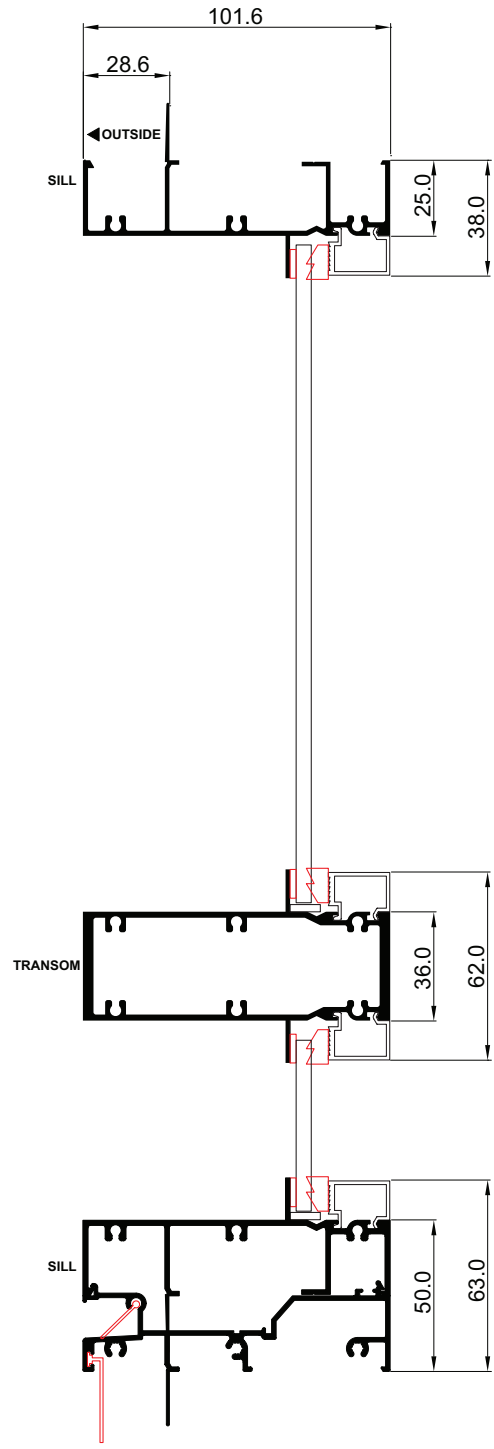
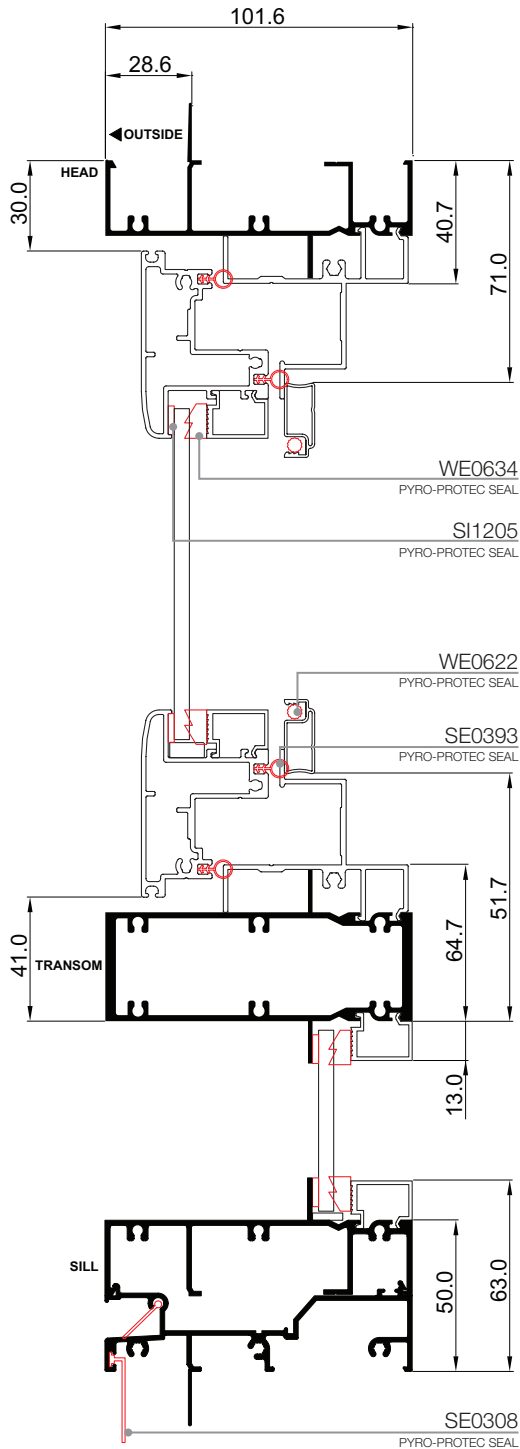
Cross Sectionional Views

Xtreme® Quantum Casement Window | **Single Light**



Cross Sectionional Views

Xtreme® Quantum Casement Window | Two Light with Lowlite



Please note that drawings are not to scale

Xtreme® Quantum Casement | QCC-E | Mk-1 | 23 July 2012

Cross Sectionional Views

Xtreme® Quantum Casement Window | Two Light with Lowlite

