

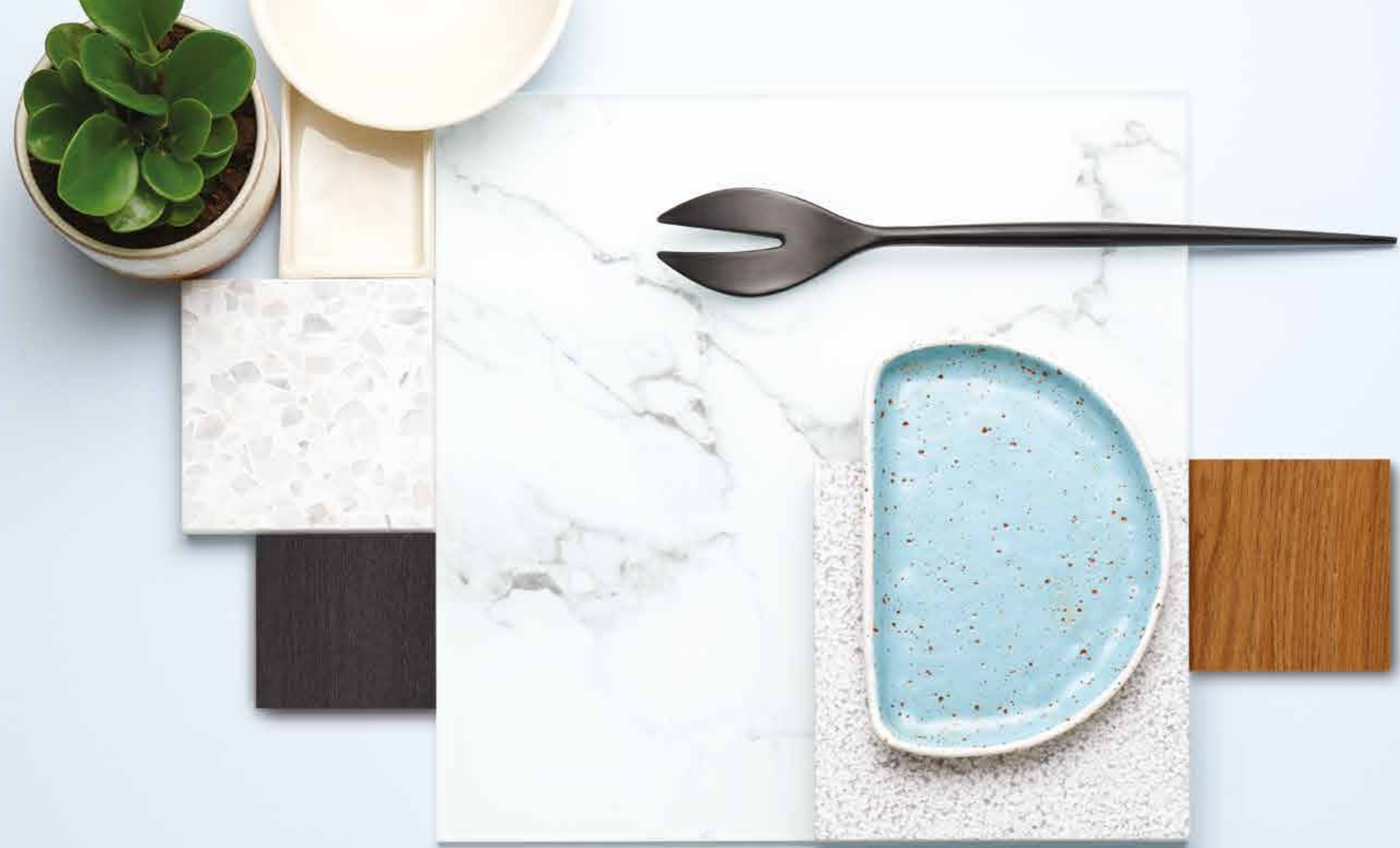
# CREATE

SPLASHBACK  
SERIES



**STEGBAR**

A JELD WEN Company



**FOR A HOME THAT RADIATES WITH STYLE AND PERSONALITY, IT HAS TO BE THE CREATE GLASS SPLASHBACK SERIES.**

While styles and trends ebb and flow, the elegance and theatre of high quality expansive glass is unquestionable. Whether it's a classic period home or a contemporary urban townhouse, an experienced glassmaker is key to making a statement of class or infusing a space with life and colour. Stegbar's range of painted, metallic and mirrored glass has been hand selected by an international designer and style forecaster to ensure your home is always on-trend.

When it comes to selecting your splashback material, there are endless reasons to choose glass. Faster to install than tiles, less upkeep than stone composite and stronger than acrylic, Stegbar's Create Series can be used behind gas cooktops, never fades or stains and is remarkably easy to clean.

- Extensively curated selection of colours, mirrors and metallic styles
- Large panel sizes to achieve a seamless look
- Made to measure
- Carefully installed by our team of experts
- Can be used in bathrooms and entryways

## CONTENTS

- 4 – DESIGN COLLECTION
- 16 – NATURAL COLLECTION
- 20 – MIRROR COLLECTION
- 24 – METALLIC COLLECTION
- 28 – COLOUR COLLECTION
- 34 – GLASS OPTIONS
- 35 – DESIGN CONSULTATION





# DESIGN COLLECTION



## DESIGN COLLECTION

**STEGBAR'S DESIGN COLLECTION BRINGS CONTEMPORARY SENSIBILITY TO THE CENTURIES OLD ART OF GEOMETRIC ORNAMENTATION.**

With a range of rhythmic patterns that take inspiration from the top trends in kitchen finishes and designs, the Design Collection's sleek and linear line work achieves a fresh modern feel using motifs that have, quite literally, never gone out of style. And with hand-selected colour blends and metallic options, each and every design has been chosen to both complement and enrich today's kitchen trends.

- Unique patterns hand selected by international design and style forecaster
- Deco, Arabesque, Chevron and Stretched Honeycomb styles
- Wide range of on-trend colour and metallic options
- Each design is printed on a perfectly matched glass type

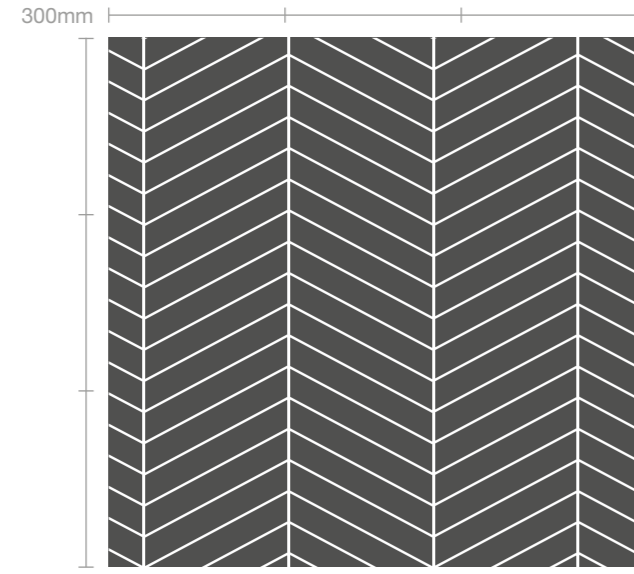
Please note: Due to the manufacturing process we cannot guarantee that designs will line up in corner configurations or joining panels. We therefore do not recommend the use of the Design Collection in these applications.

FOR A CLEAN AND CONTEMPORARY LOOK  
THAT WON'T EVER TIRE, IT HAS TO BE A  
DESIGN SPLASHBACK BY STEGBAR.

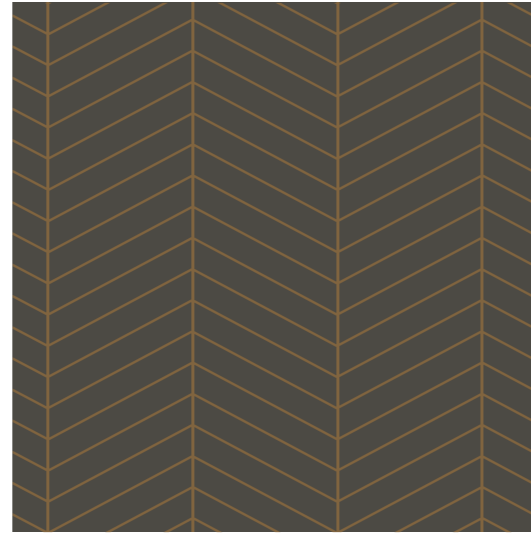


Pictured: C7. Chevron White / Dusty Grey – Clarity Matte Glass

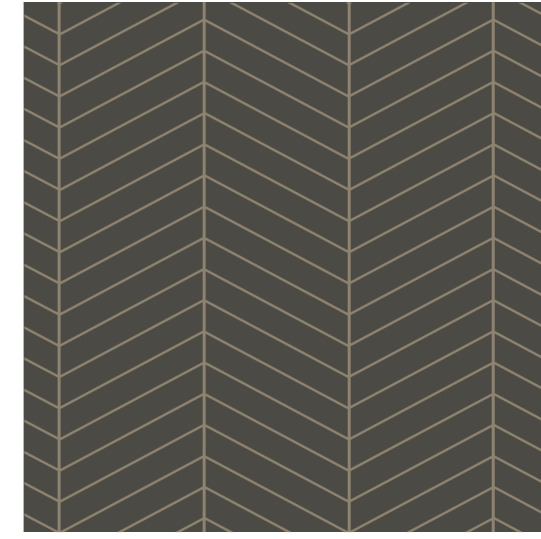
# CHEVRON



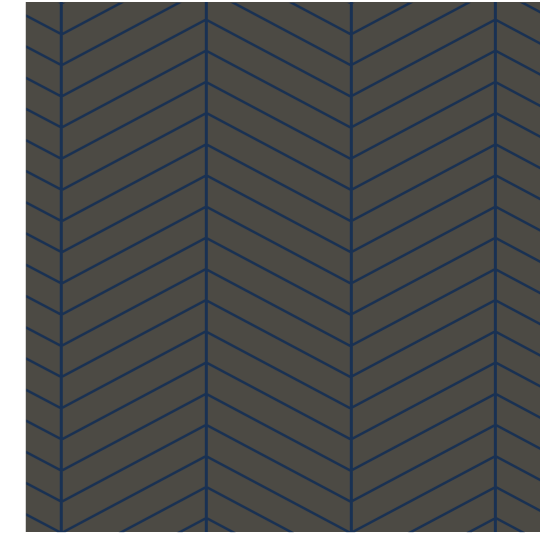
C1. Anthracite / White – Lustré Matte Glass



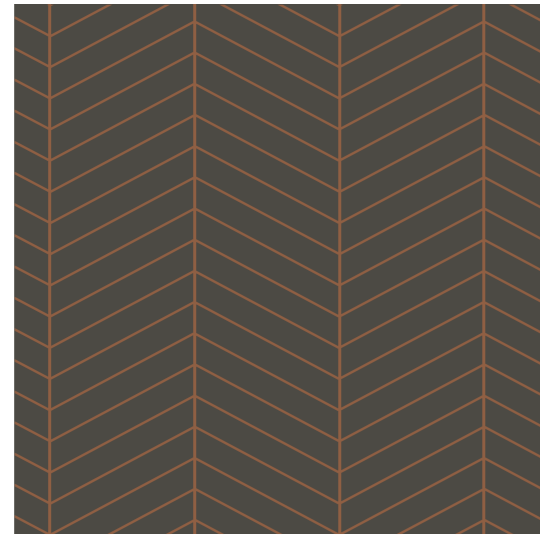
C2. Warm Grey / Pearl Gold – Lustré Matte Glass



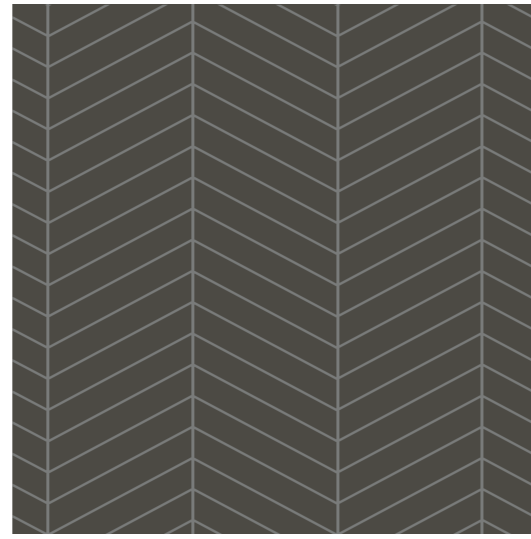
C5. Warm Grey / Pearl Beige – Lustré Matte Glass



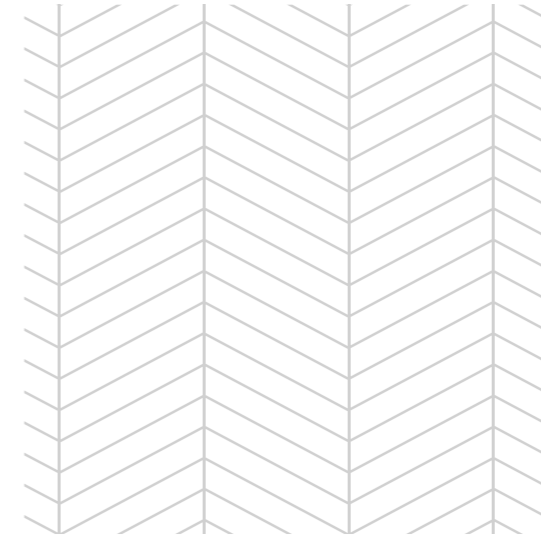
C6. Warm Grey / Cobalt Blue – Lustré Matte Glass



C3. Warm Grey / Pearl Copper – Lustré Matte Glass

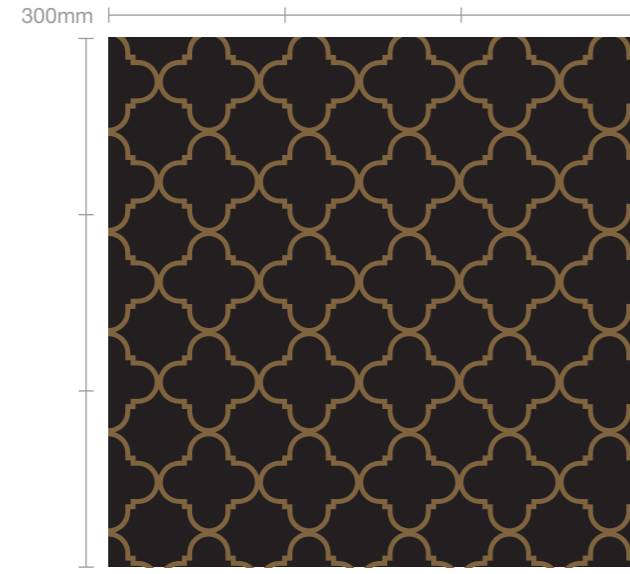


C4. Warm Grey / Pearl Dark Grey – Lustré Matte Glass

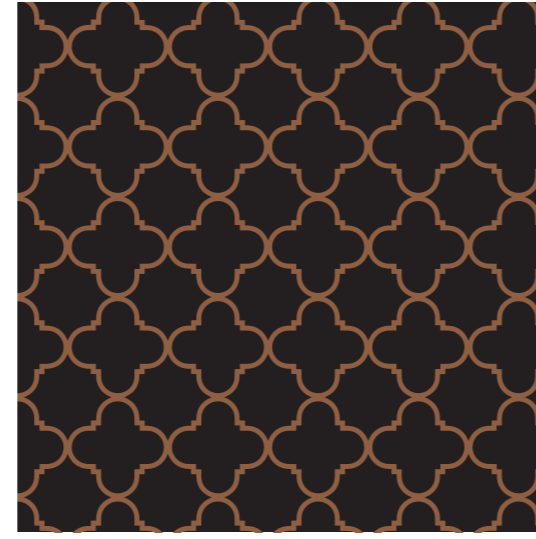


C7. White / Dusty Grey – Clarity Matte Glass

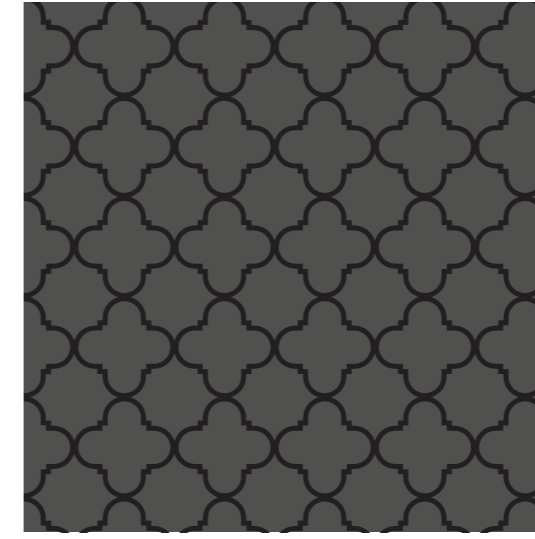
# ARABESQUE



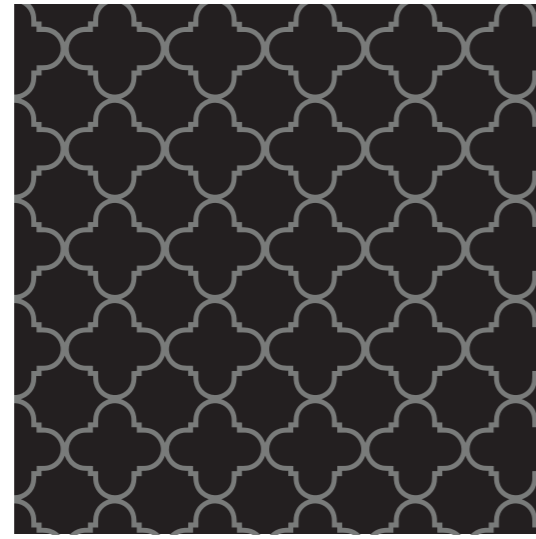
A1. Black / Pearl Gold – Lustre Matte Glass



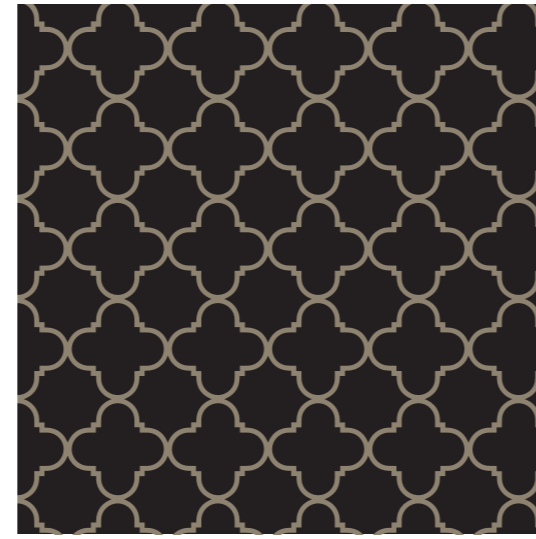
A2. Black / Pearl Copper – Lustre Matte Glass



A5. Anthracite / Black – Lustre Matte Glass



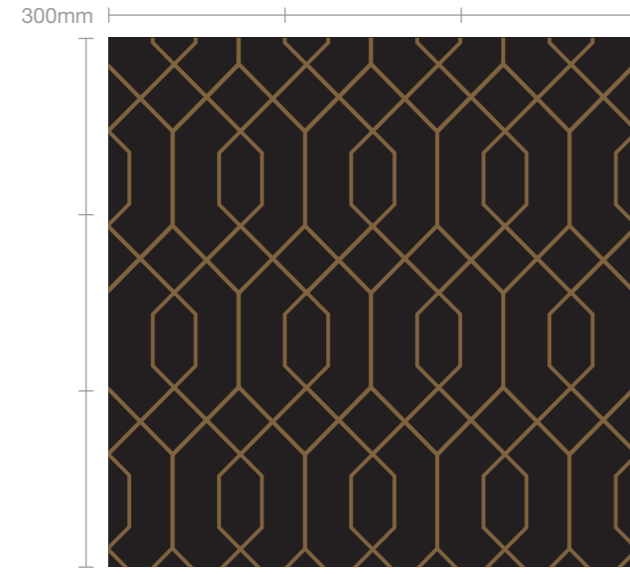
A3. Black / Pearl Dark Grey – Lustre Matte Glass



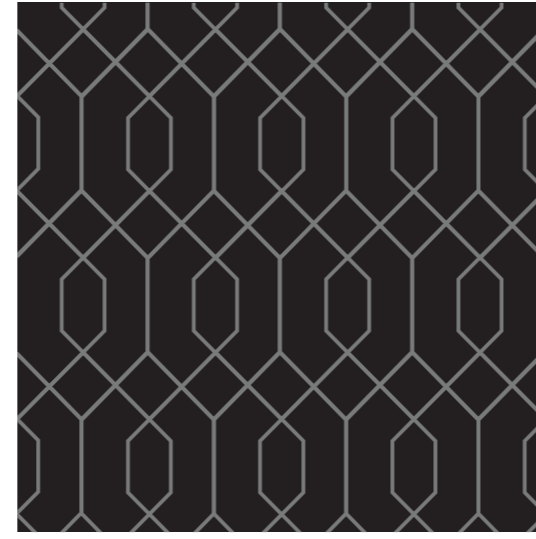
A4. Black / Pearl Beige – Lustre Matte Glass



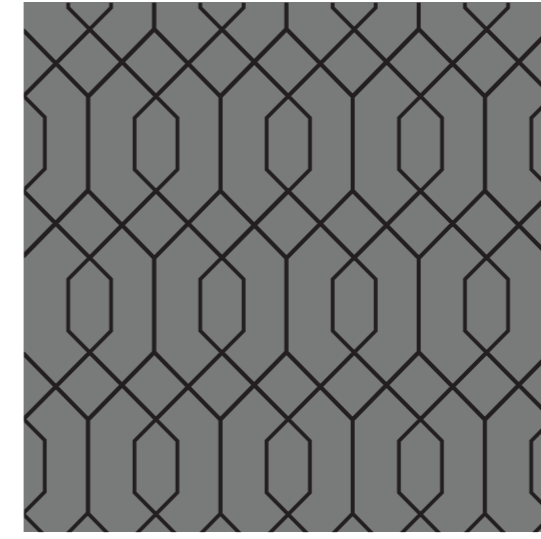
# DECO



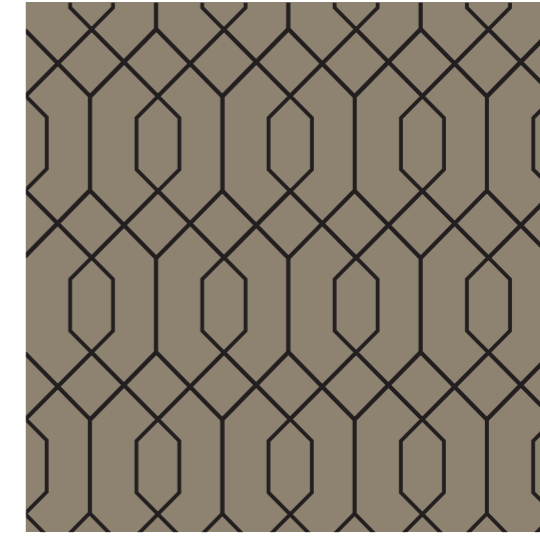
D1. Black / Pearl Gold – Clarity Gloss Glass



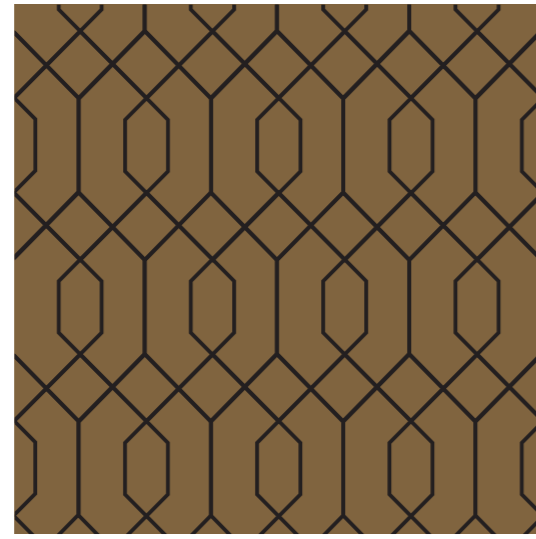
D2. Black / Pearl Dark Grey – Clarity Gloss Glass



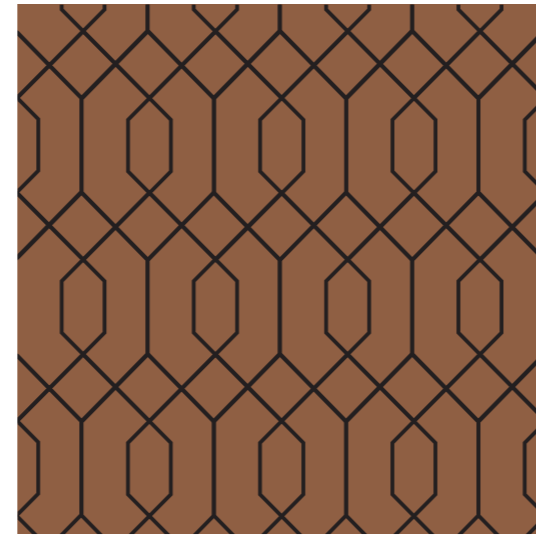
D5. Pearl Dark Grey / Black – Clarity Gloss Glass



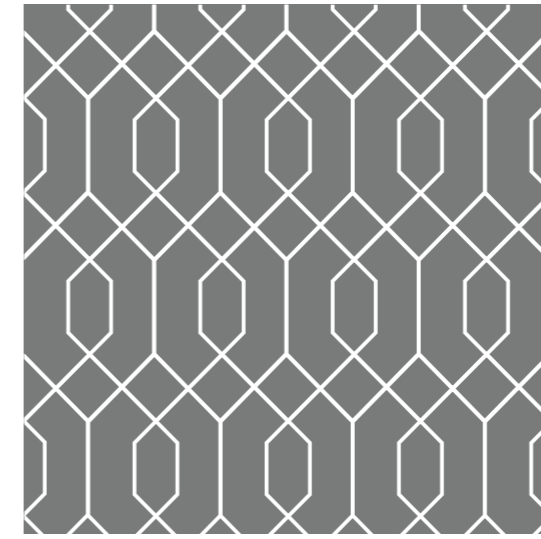
D6. Pearl Beige / Black – Clarity Gloss Glass



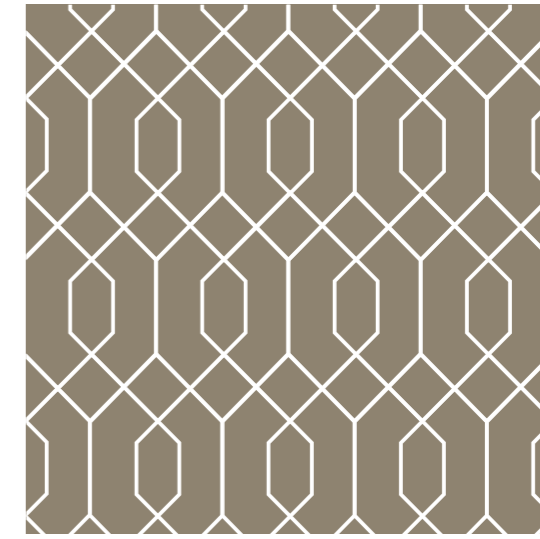
D3. Pearl Gold / Black – Clarity Gloss Glass



D4. Pearl Copper / Black – Clarity Gloss Glass

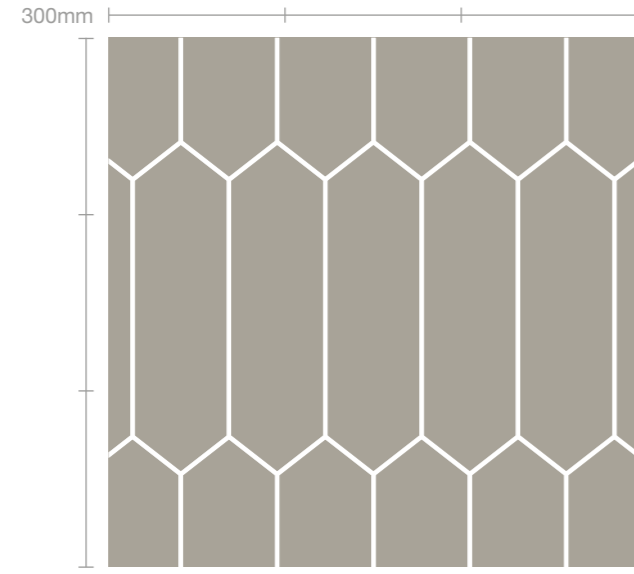


D7. Pearl Dark Grey / White – Clarity Gloss Glass

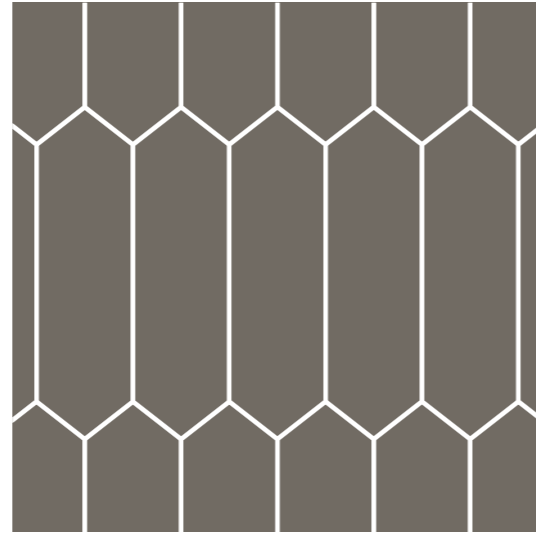


D8. Pearl Beige / White – Clarity Gloss Glass

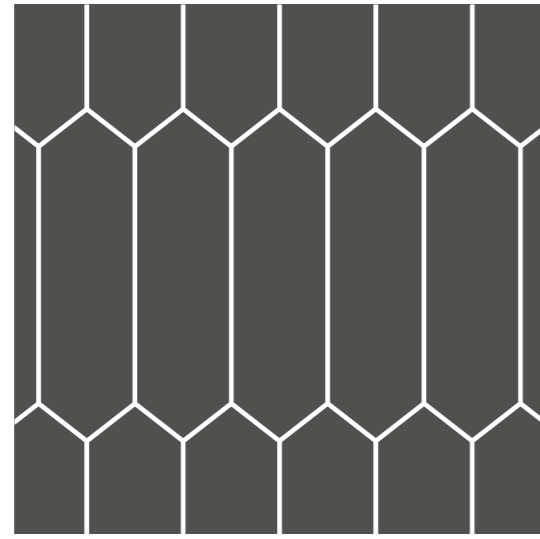
# STRETCHED HONEYCOMB



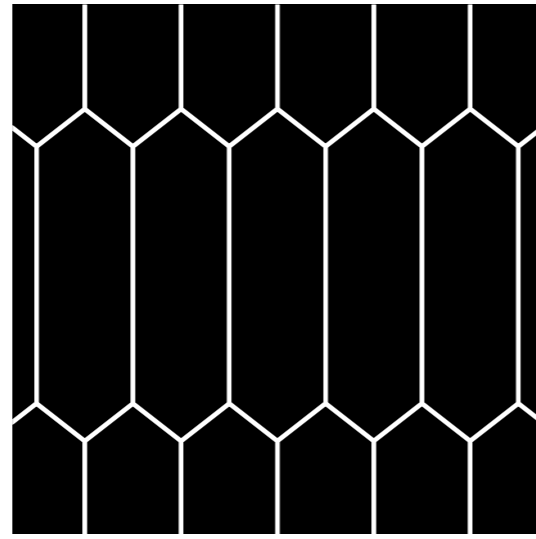
H1. Travertine / White – Clarity Matte Glass



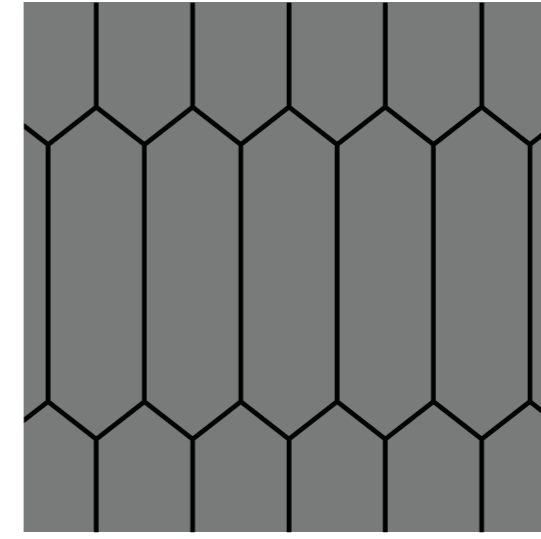
H2. Flagstone / White – Clarity Matte Glass



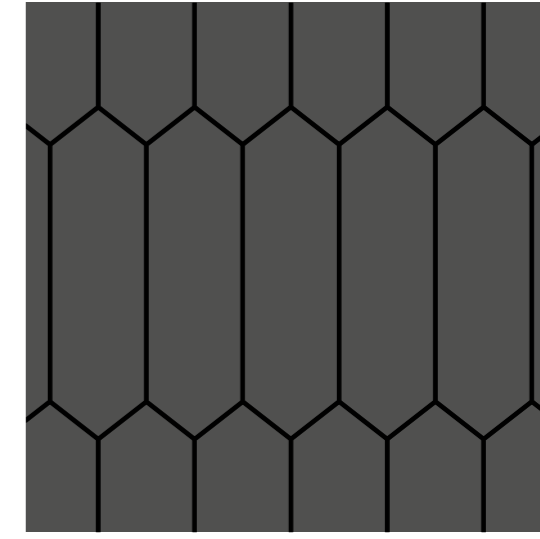
H3. Anthracite / White – Clarity Matte Glass



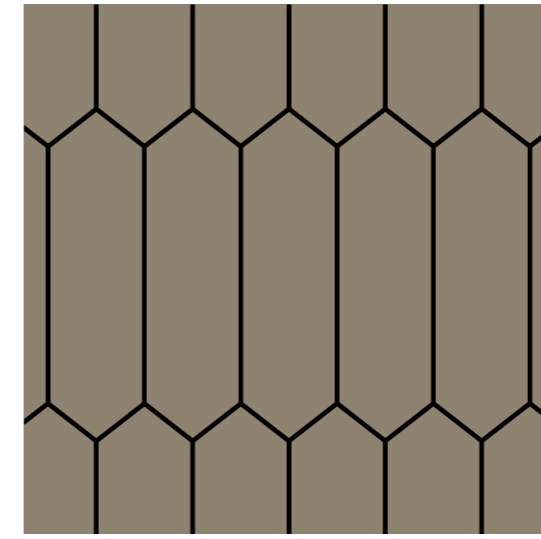
H4. Black / White – Clarity Matte Glass



H5. Pearl Dark Grey / Black – Lustre Matte Glass



H6. Anthracite / Black – Lustre Matte Glass



H7. Pearl Beige / Black – Lustre Matte Glass





# NATURAL COLLECTION

## NATURAL COLLECTION

**STEGBAR'S NATURAL COLLECTION PROVIDES THE STATUS AND ALLURE OF STONE AND MARBLE WITHOUT THE UPKEEP NORMALLY ASSOCIATED WITH HIGH CLASS ORGANIC MATERIALS.**

The utility of natural materials has always been its strength, and the ability to combine a Natural splashback with timbers, metallic and matte finishes to modernise your kitchen is hard to look past. Whether you're chasing a sense of grandeur via a marble finish or the industrial accent of concrete, it can all be done without arduous installation and ongoing maintenance by opting for a stylised glass splashback from Stegbar.

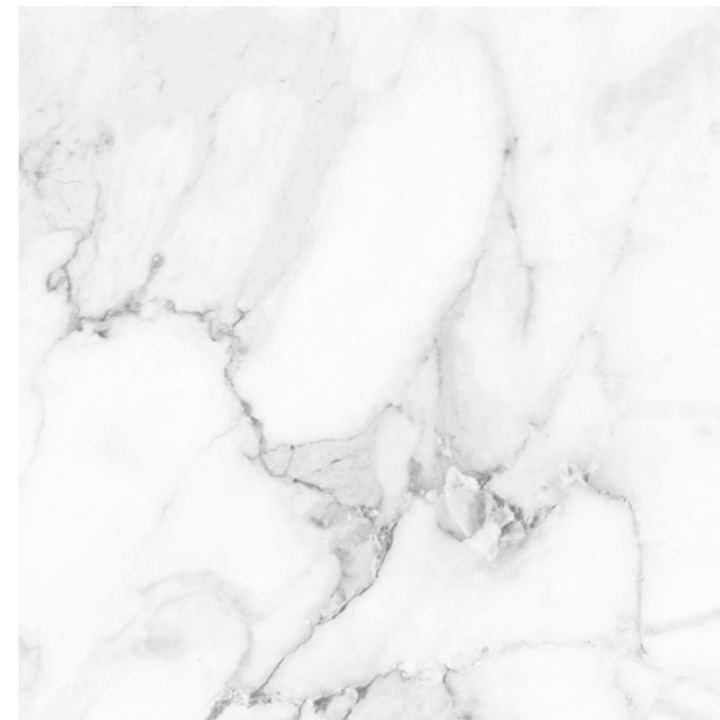
- Mimic the look and finish of natural materials
- Glass requires less upkeep than stone and concrete
- Never fades or stains
- Simple installation and integration with any kitchen
- Each design is printed on Clarity Matte glass, providing an ultra matte finish that mimics the look of stone

Please note: Due to the manufacturing process we cannot guarantee that designs will line up in corner configurations or joining panels.



**FOR THE RAW ATTRACTION OF NATURE'S MOST SOUGHT AFTER MATERIALS, WITHOUT THE COMPLICATIONS, IT HAS TO BE A NATURAL SPLASHBACK BY STEGBAR.**

**Pictured: Ma1. Marble Clarity Matte Glass**



**Ma1. Marble Clarity Matte Glass**



**Co1. Grey Cement Clarity Matte Glass**





# MIRROR COLLECTION



## MIRROR COLLECTION

**NO MATTER THE SIZE, A STEGBAR MİRRORED SPLASHBACK WILL CREATE A SENSE OF SPACIOUSNESS AND MODERNITY IN YOUR KITCHEN.**

Reflect a city skyline, garden, outdoor entertainment area or beautiful views surrounding your home. A hallmark of urban contemporary design, a mirrored splashback can instantly add an expansive feel to your kitchen. Stegbar even offers prestige grey and bronze mirror glass, often found only in the most exclusive locations, to all of our customers.

- Available in grey, silver and bronze
- Add a sense of space to your kitchen
- Reflect the outside world into your home



**SM.** Silver Mirror



**BM.** Bronze Mirror



**GM.** Grey Mirror



# METALLIC COLLECTION

## METALLIC COLLECTION

THE IMMEDIATE IMPACT OF A STEGBAR METALLIC SPLASHBACK IS PERFECT FOR THOSE NOT CONTENT WITH TRADITIONAL KITCHEN DESIGN.

Being a highly functional space, luxurious kitchen design is often overlooked, but there's no reason why your kitchen can't make as big an impact as any other part of your home. Stegbar's Metallic Collection can perfectly complement your designer tapware and hardware and cleverly integrates into not only modern kitchens, but vintage and industrial fit outs.

- Make your kitchen a centrepiece
- Works with luxe, vintage or industrial kitchens
- Pairs beautifully with timbers, stones and white
- Can be used to complement tapware and hardware
- Glass finish options include Clarity Gloss or Lustre Matte Glass
- Availability of glass types can vary depending on the size and configuration of your splashback, speak with your Stegbar sales consultant for more details

FOR A GRAND STATEMENT THAT TRANSCENDS MODERN AND VINTAGE DESIGN, IT HAS TO BE A METALLIC SPLASHBACK BY STEGBAR.

Pictured: M1. Pearl Gold



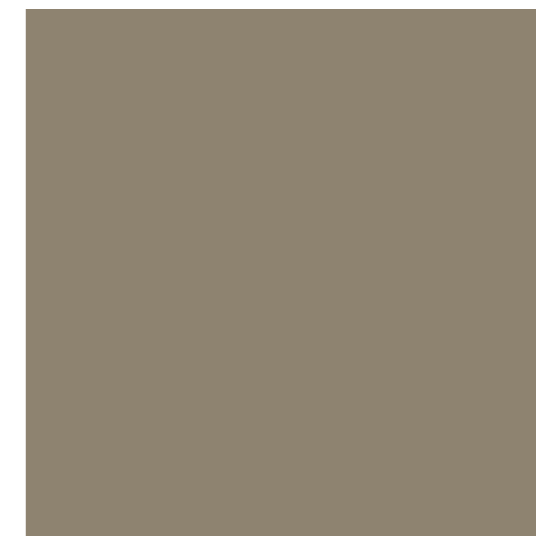
M1. Pearl Gold



M2. Pearl Dark Grey



M3. Pearl Copper



M4. Pearl Beige





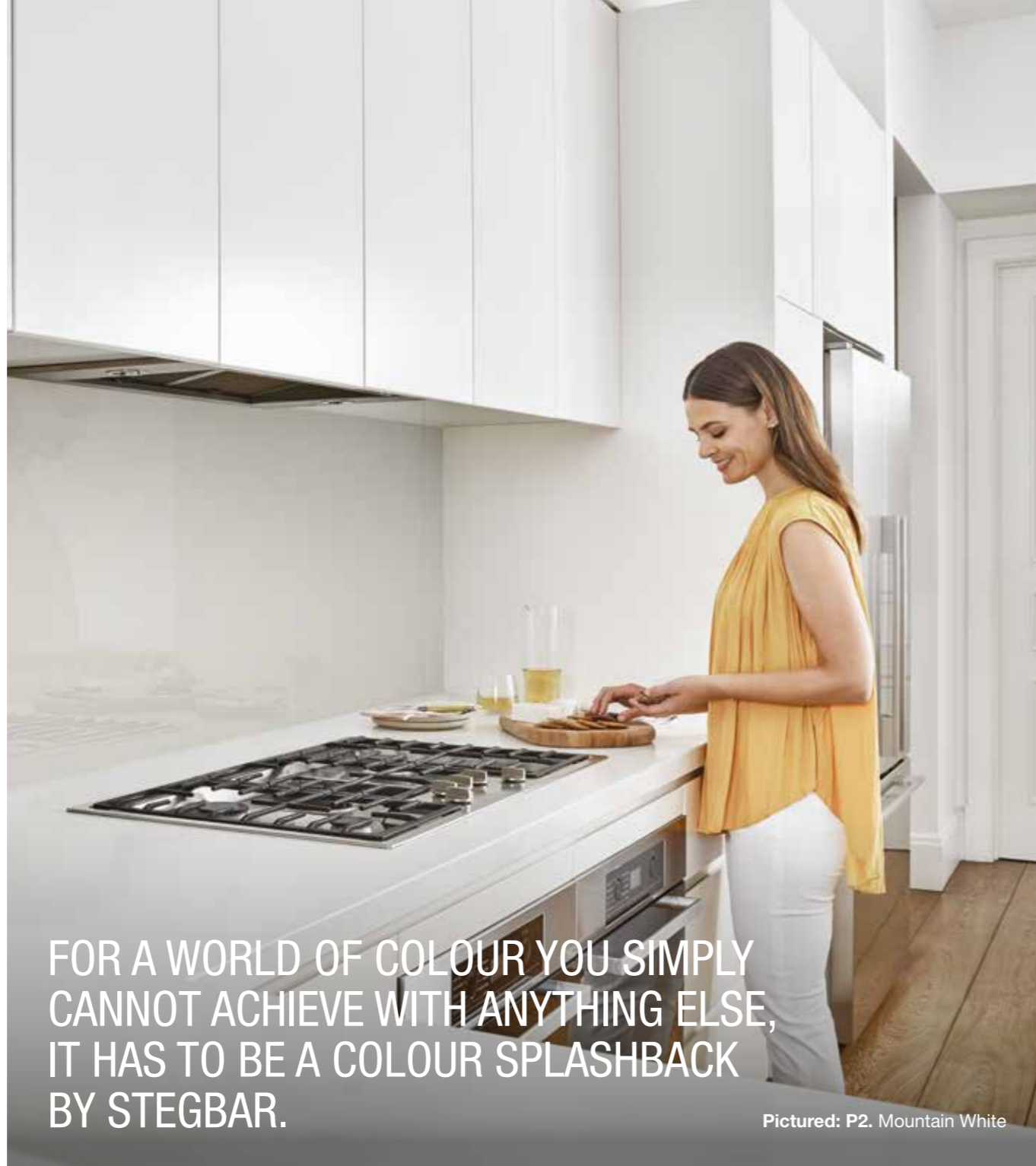
# COLOUR COLLECTION

## COLOUR COLLECTION

**STEGBAR'S INCREDIBLY EXTENSIVE RANGE MAKES COLOUR GLASS SPLASHBACKS THE MOST VERSATILE OPTION TO EITHER MATCH OR CONTRAST WITH YOUR EXISTING KITCHEN ELEMENTS.**

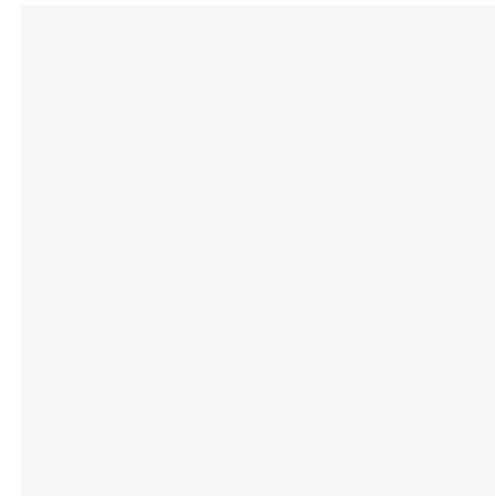
Available in vibrant high gloss or contemporary matte finishes, Colour splashbacks bring vibrancy to your kitchen by reflecting light and reducing shadows. And with the much coveted option of Clarity Glass, there is absolutely nothing standing in the way of achieving the most vivid of colours to enliven your kitchen space.

- Wide selection of colours
- A timeless option which complements all kitchen styles
- Glass finish options include Clarity Matte or Clarity Gloss. Availability of glass types can vary depending on the size and configuration of your splashback, speak with your Stegbar sales consultant for more details

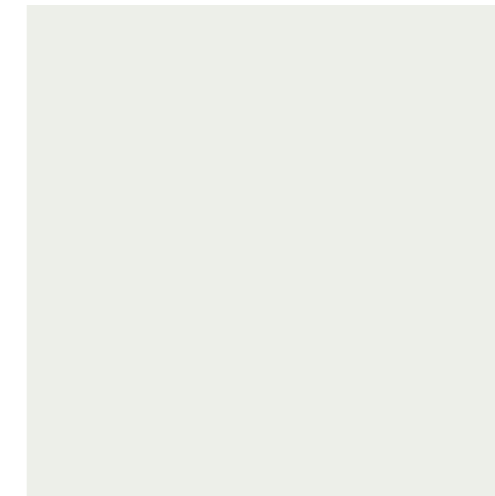


FOR A WORLD OF COLOUR YOU SIMPLY CANNOT ACHIEVE WITH ANYTHING ELSE, IT HAS TO BE A COLOUR SPLASHBACK BY STEGBAR.

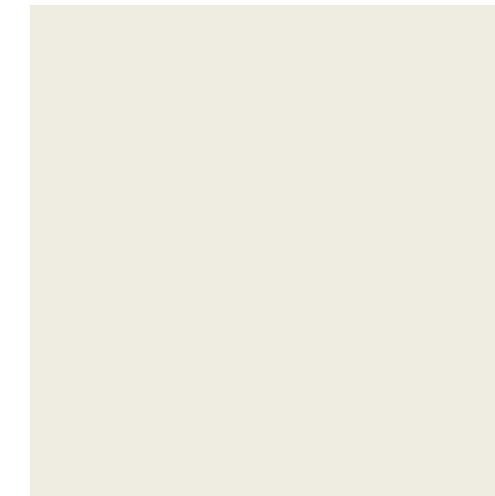
Pictured: P2. Mountain White



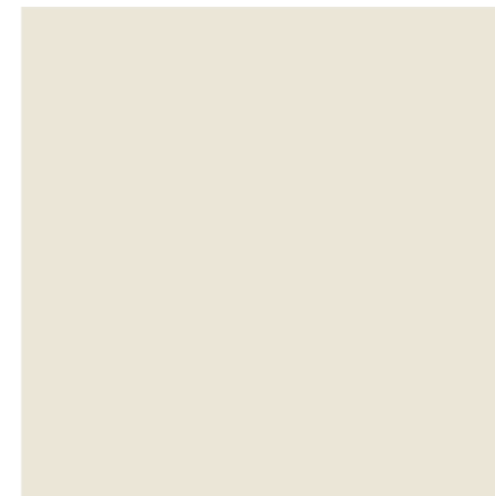
P1. Bianco Mist



P2. Mountain White



P3. China Silk



P4. Limestone



P5. Raw Ceramic



P6. Sailcloth



**P7.** Warm Cashmere



**P8.** Soft Mica



**P9.** Travertine



**P10.** Riverbed



**P15.** Smooth Grey



**P16.** Pepper



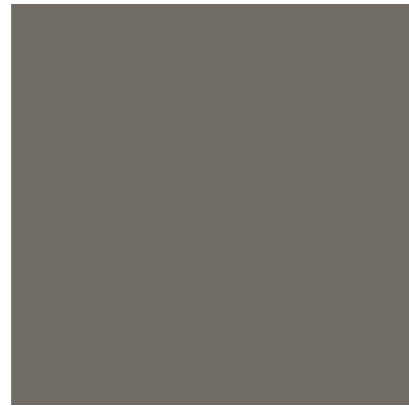
**P17.** Logan Rock



**P18.** Anthracite



**P11.** Shalestone



**P12.** Flagstone



**P13.** Basalt



**P14.** Noblestone



**P19.** Charcoal



**P20.** Black



## GLASS OPTIONS

### Clarity Matte Glass

- Extra clear glass – ultimate clarity of colour, no green tinge
- Ultra matte finish
- Commonly known as Low Iron Acid Etch glass

### Clarity Gloss Glass

- Extra clear glass – ultimate clarity of colour, no green tinge
- Gloss/reflective finish
- Commonly known as Low Iron glass

### Lustre Matte Glass

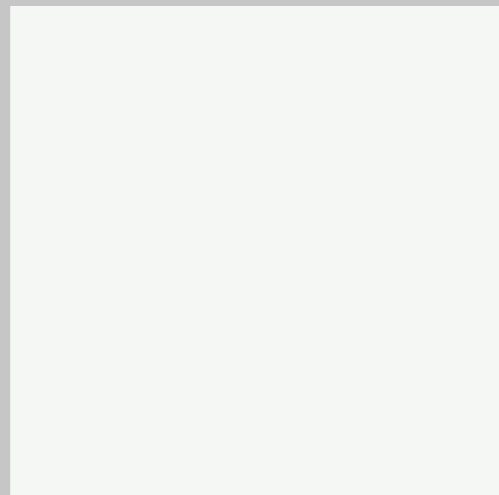
- Standard everyday glass – will show a slight ‘green tinge’ to colours
- Smooth matte finish

### Lustre Gloss Glass

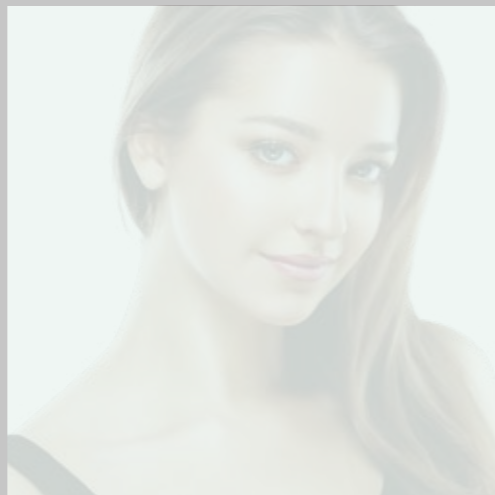
- Standard everyday glass – will show a slight ‘green tinge’ to colours
- Gloss/reflective finish
- Commonly known as Clear glass

### Nanoclean Protective Coating

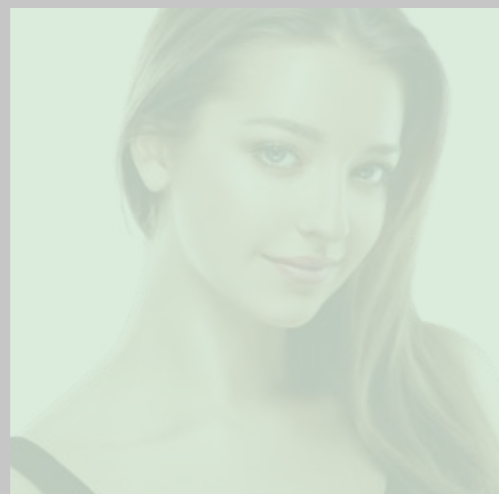
- Can be used on all glass finishes
- Repels oil and water
- Reduces cleaning time by up to 90%
- No need for harsh chemicals when cleaning – just wipe down with microfibre cloth



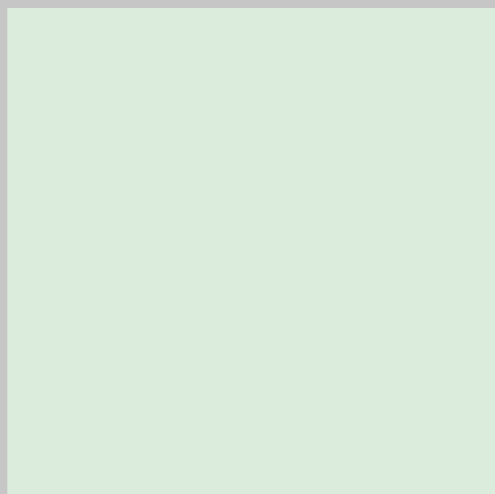
Bianco Mist on Clarity Matte Glass



Bianco Mist on Clarity Gloss Glass



Bianco Mist on Lustre Gloss Glass



Bianco Mist on Lustre Matte Glass

Please note: Availability of glass types can vary depending on the size and configuration of your splashback, speak with your Stegbar sales consultant for more details.

## DESIGN CONSULTATION

**WE UNDERSTAND THAT THERE ARE MANY ELEMENTS THAT COME TOGETHER TO CREATE A KITCHEN, AND BEING THE MOST IMPORTANT ROOM OF THE HOME, WE WANT TO ASSIST IN HELPING YOU CREATING YOUR PERFECT SPACE. THAT'S WHY WE OFFER A FREE DESIGN CONSULTATION AT YOUR HOME, OR IN OUR SHOWROOM, AT A TIME THAT SUITS YOU.**

So whether you're brimming with ideas or just lots of questions, we'll work with you to decide on the perfect splashback design to suit your kitchen.

At your appointment, your Stegbar consultant will:

- Discuss your needs and ideas around style and the range available
- Show you colour and glass options
- Measure your space and note any special requirements



**TO FIND YOUR NEAREST SHOWROOM VISIT [STEGBAR.COM.AU](http://STEGBAR.COM.AU) OR CALL US ON 1800 681 168**

We recommend checking your chosen finish against an actual sample of the product before purchasing, as varying light conditions and limitations of the printing process may affect perceived finish.

JELD-WEN Australia has used its best endeavours to ensure material is accurate at the time of printing. All information must be confirmed with your Stegbar Sales Consultant at the time of ordering, as specifications and details may change over time and product offerings differ from state to state. Colours displayed are a guide only and may vary from actual colours. For all product disclaimer and warranty information applicable to this catalogue and other Stegbar products visit [stegbar.com.au](http://stegbar.com.au). Stegbar Pty Limited ACN 007 090 280 ABN 52 007 090 280 ©STEGBAR 2018. All rights reserved. JWSNAT0319/218 FSA/STEG0247



**1800 681 168**  
**[stegbar.com.au](http://stegbar.com.au)**